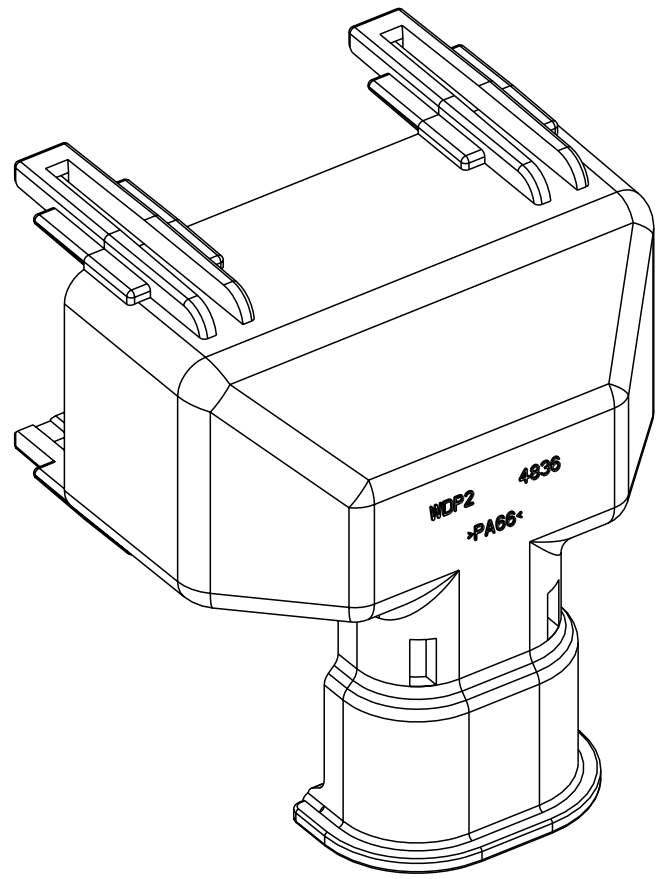
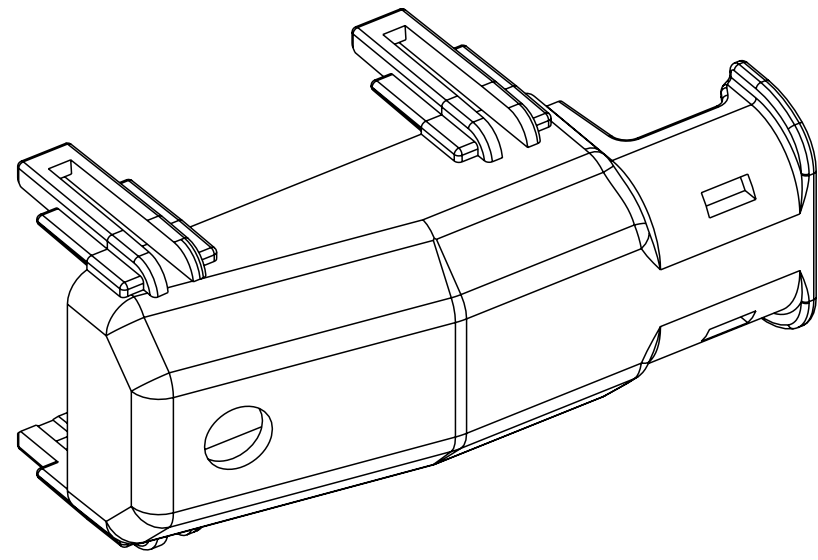


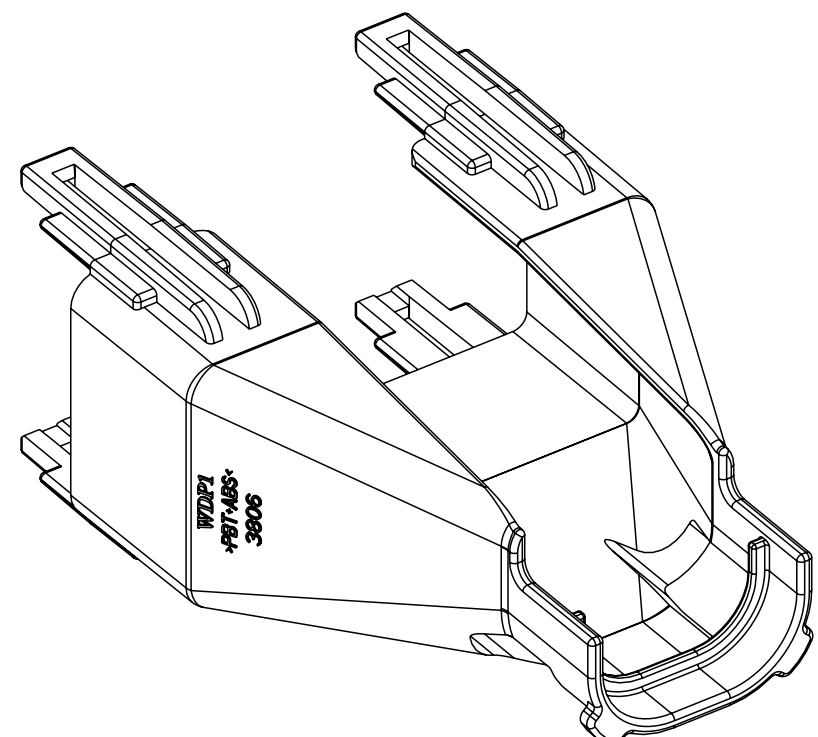
9U5T-14N003-KA
OPTIONAL WIRE DRESS
FOR REFERENCE ONLY



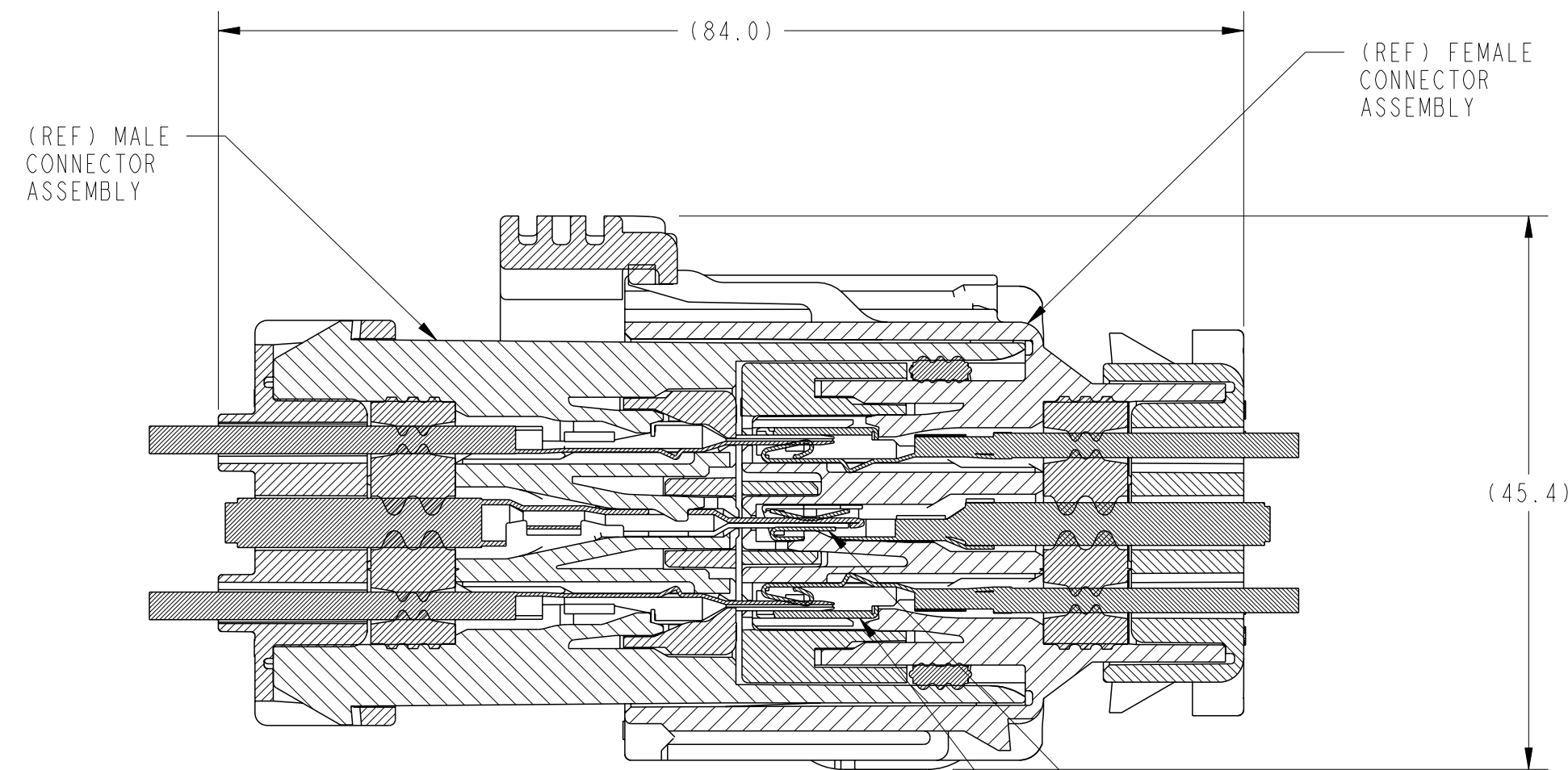
GU5T-14N003-FA
OPTIONAL WIRE DRESS
FOR REFERENCE ONLY



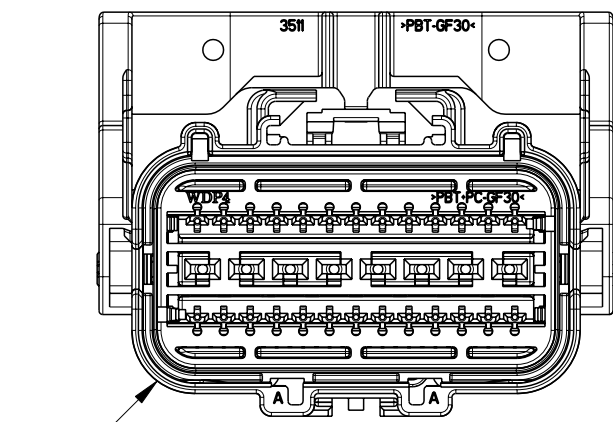
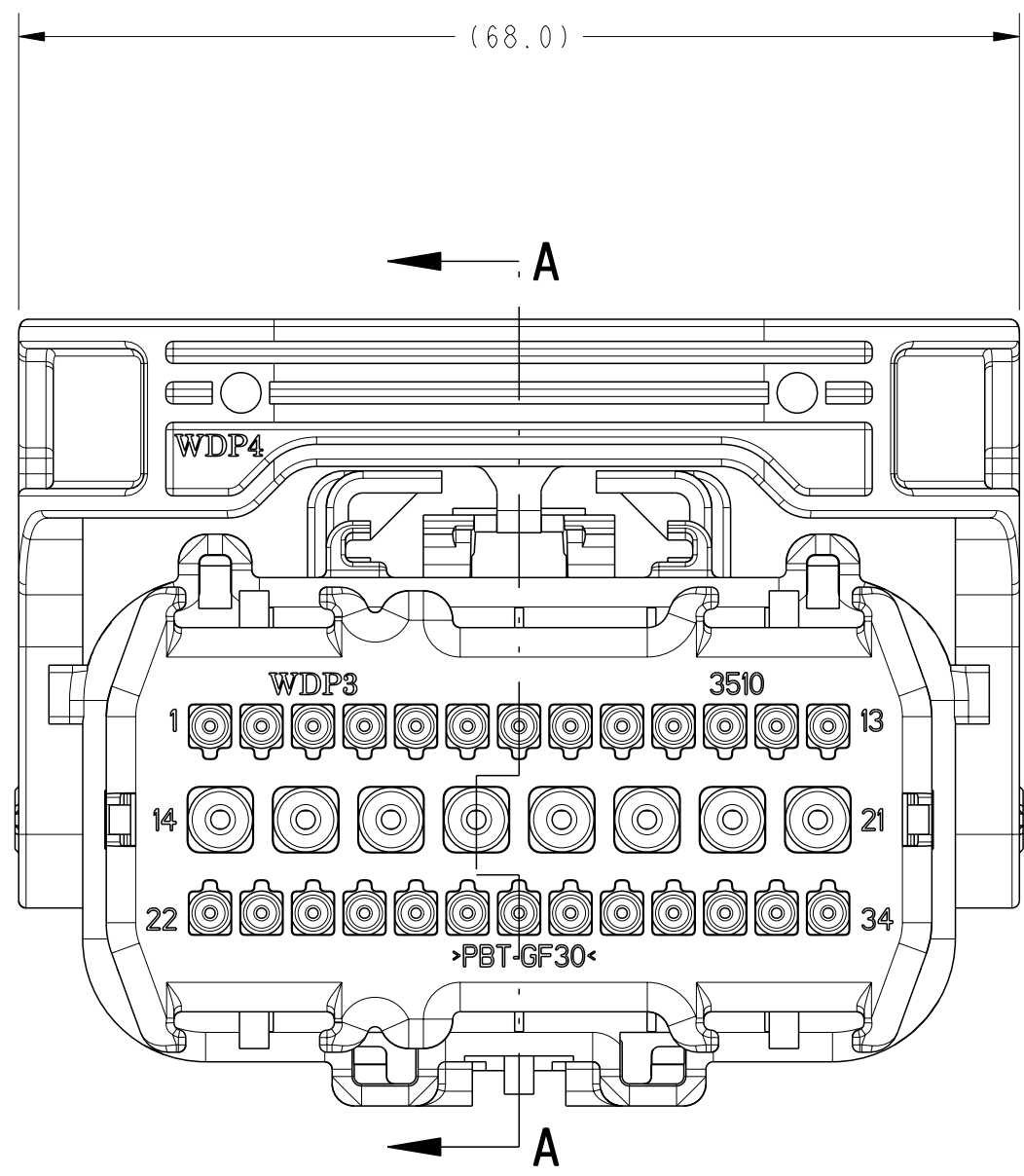
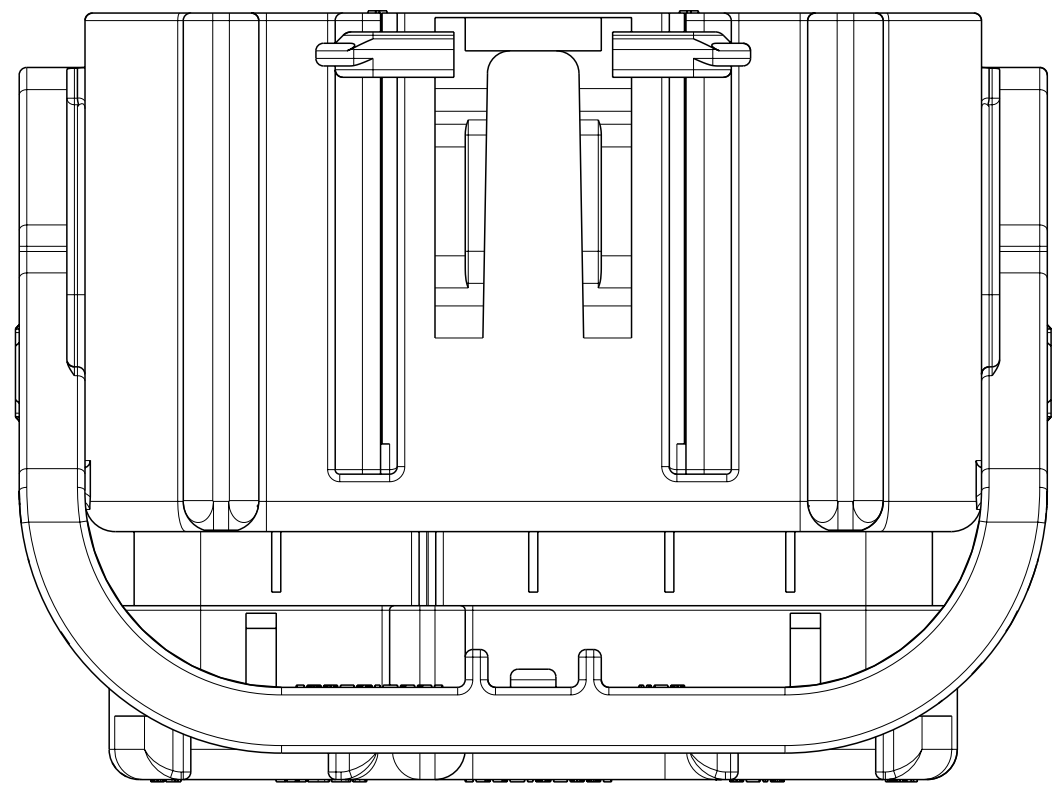
CU5T-14N003-GA
OPTIONAL WIRE DRESS
FOR REFERENCE ONLY



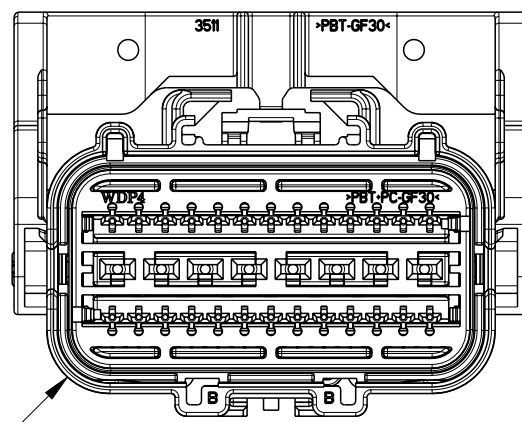
GU5T-14N003-DA
OPTIONAL WIRE DRESS
FOR REFERENCE ONLY



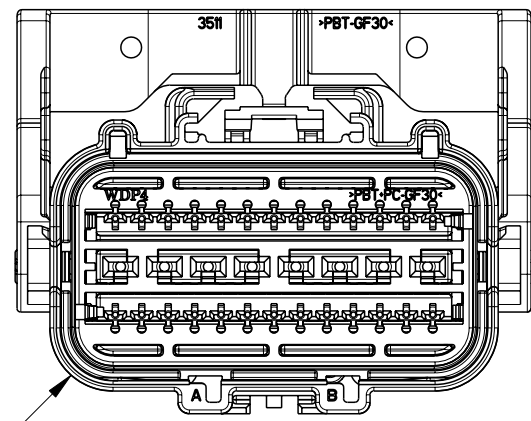
ASSEMBLY SECTION
SHOWING MATING COMPONENTS
FOR REFERENCE ONLY



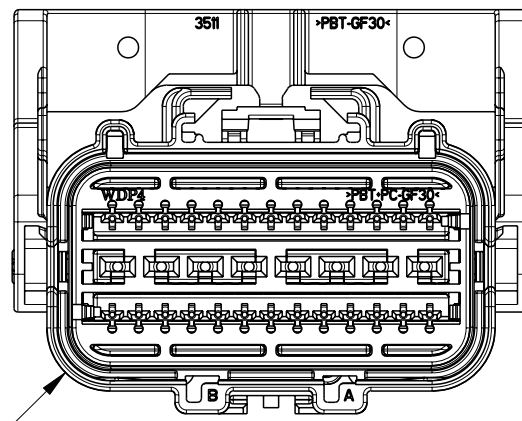
"A" POLARIZATION



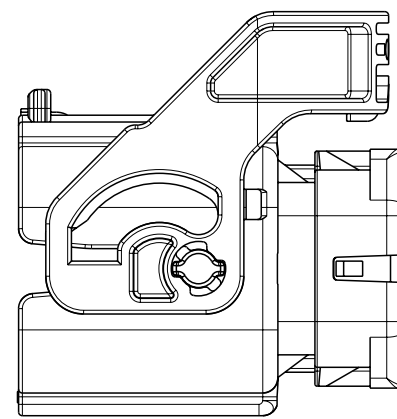
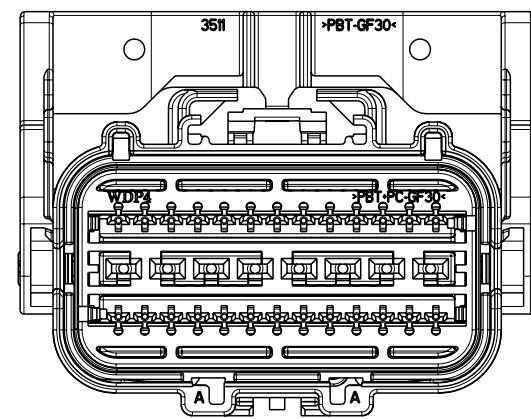
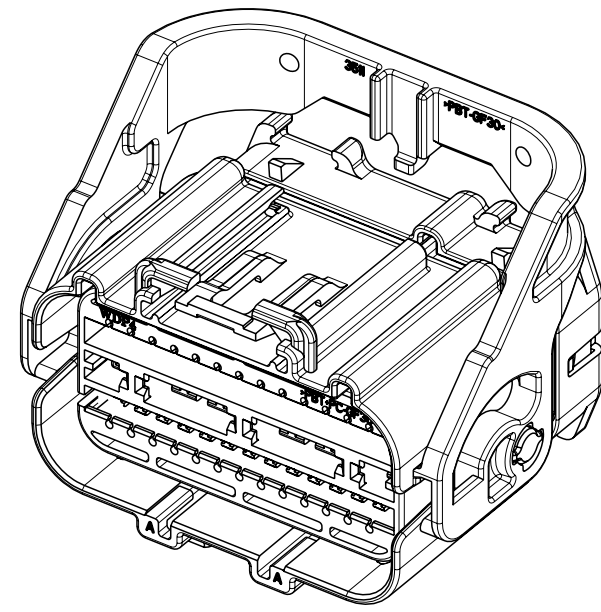
"B" POLARIZATION



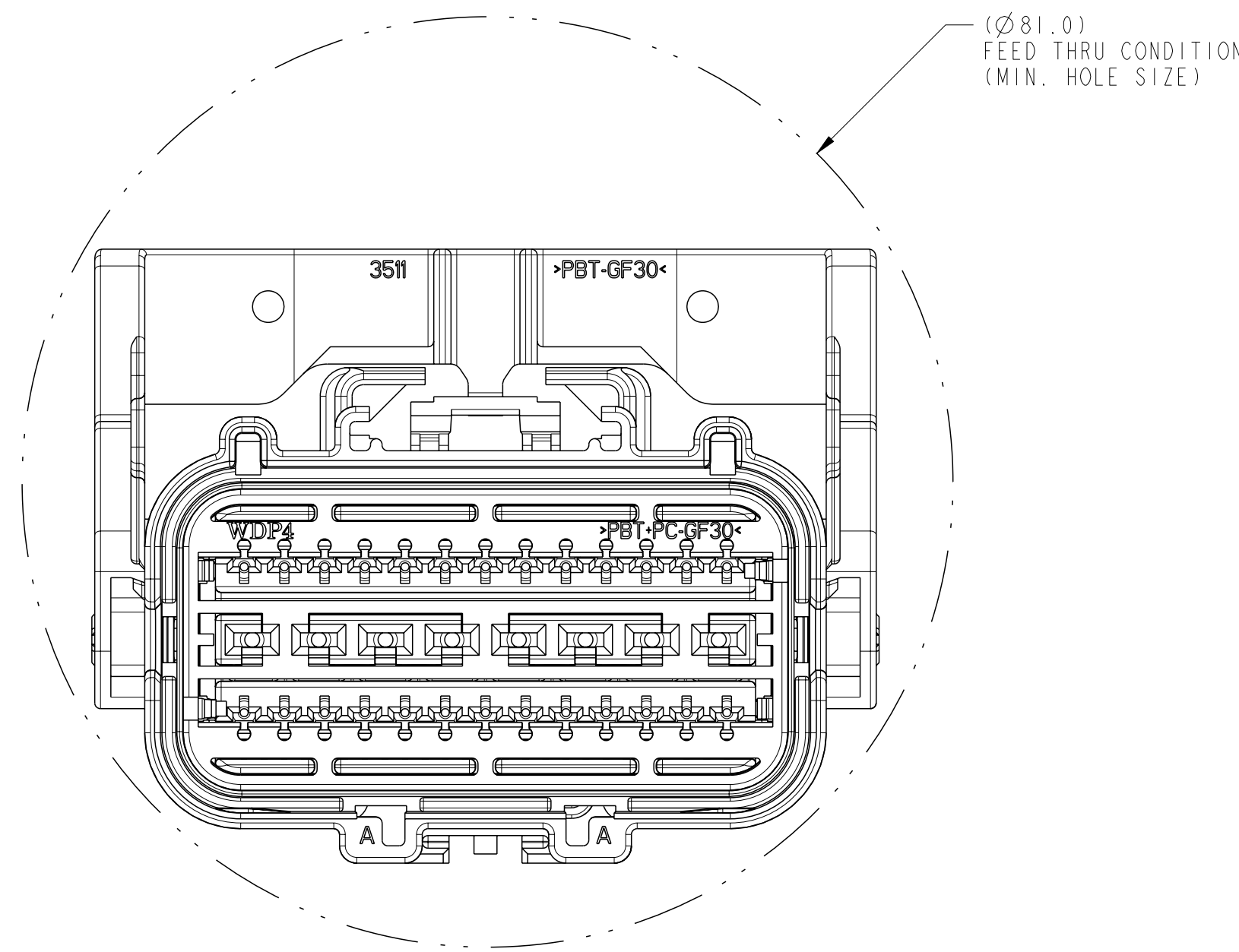
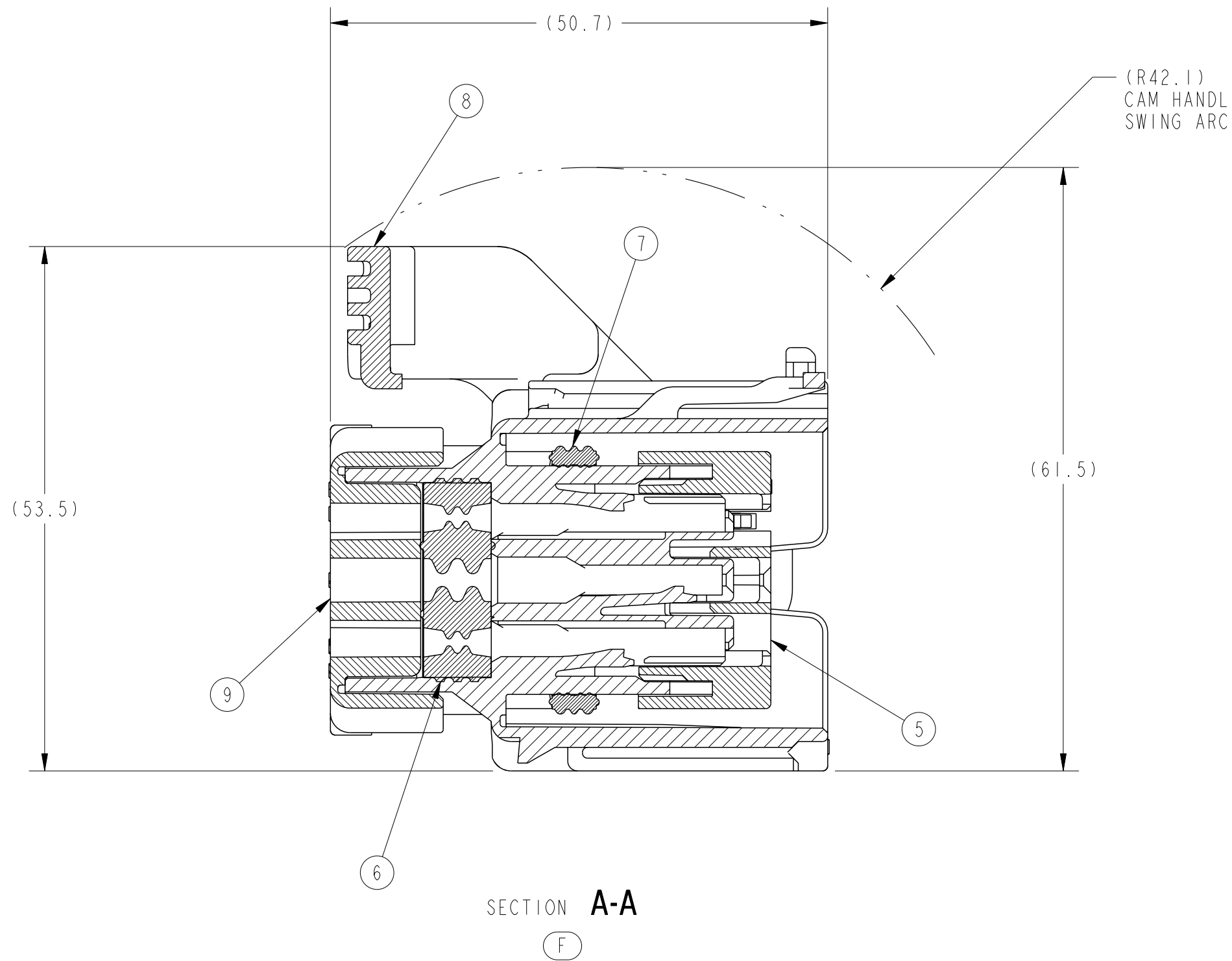
"C" POLARIZATION



"D" POLARIZATION



FULL SIZE VIEWS



NOTES: UNLESS OTHERWISE SPECIFIED

PART MUST CONFORM TO THE ELECTRICAL CONNECTION DESIGN SPECIFICATION (SDS), (REV. 14/26-MAR-07) WITH THE FOLLOWING EXCEPTIONS:
SAL/USCAR-2, 5.4.8 GROMMET COVER WIRE DRESS FEATURES DISTORTED
EL-0172 #4 CONNECTOR PRE-LOCK INSERTION FORCE = 72 N MAX

PART MUST CONFORM TO THE LATEST LEVEL OF USCAR REFERENCED IN THE SDS.
MAXIMUM INSERTION FORCE FULLY POPULATED WITH TIN TERMINALS = 70 N.

ALL PLASTIC PARTS MUST HAVE MATERIAL IDENTIFICATION SYMBOLS CLEARLY MARKED, WHEREVER PACKAGE SIZE PERMITS.

FOR ENGINEERING APPROVED SOURCE, SEE ENGINEERING RELEASE.

GENERAL TOLERANCE:
±0.3 ALL ONE PLACE DIMENSIONS
±0.10 ALL TWO PLACE DIMENSIONS
±1°00" ALL ANGULAR DIMENSIONS

FEED THROUGH CONDITION (I.E. MIN HOLE SIZE) TO GIVE 2MM TOTAL CLEARANCE ACROSS THE MAXIMUM DIAMETER.

0.3mm MAXIMUM RADIUS PERMISSIBLE ON EDGES SHOWN AS SHARP FOR PLASTIC PARTS.

ALL RADIUS R0.5.

PARTS ARE TO BE FREE OF SCRATCHES, DISCOLORATION, SALT RESIDUE OR OTHER IMPERFECTIONS THAT MAY AFFECT FUNCTION OR FIT OF PART.

DRAWING CONFORMS TO AYP-(T404/T406)-001 REVISION C DATED 8-8-03.

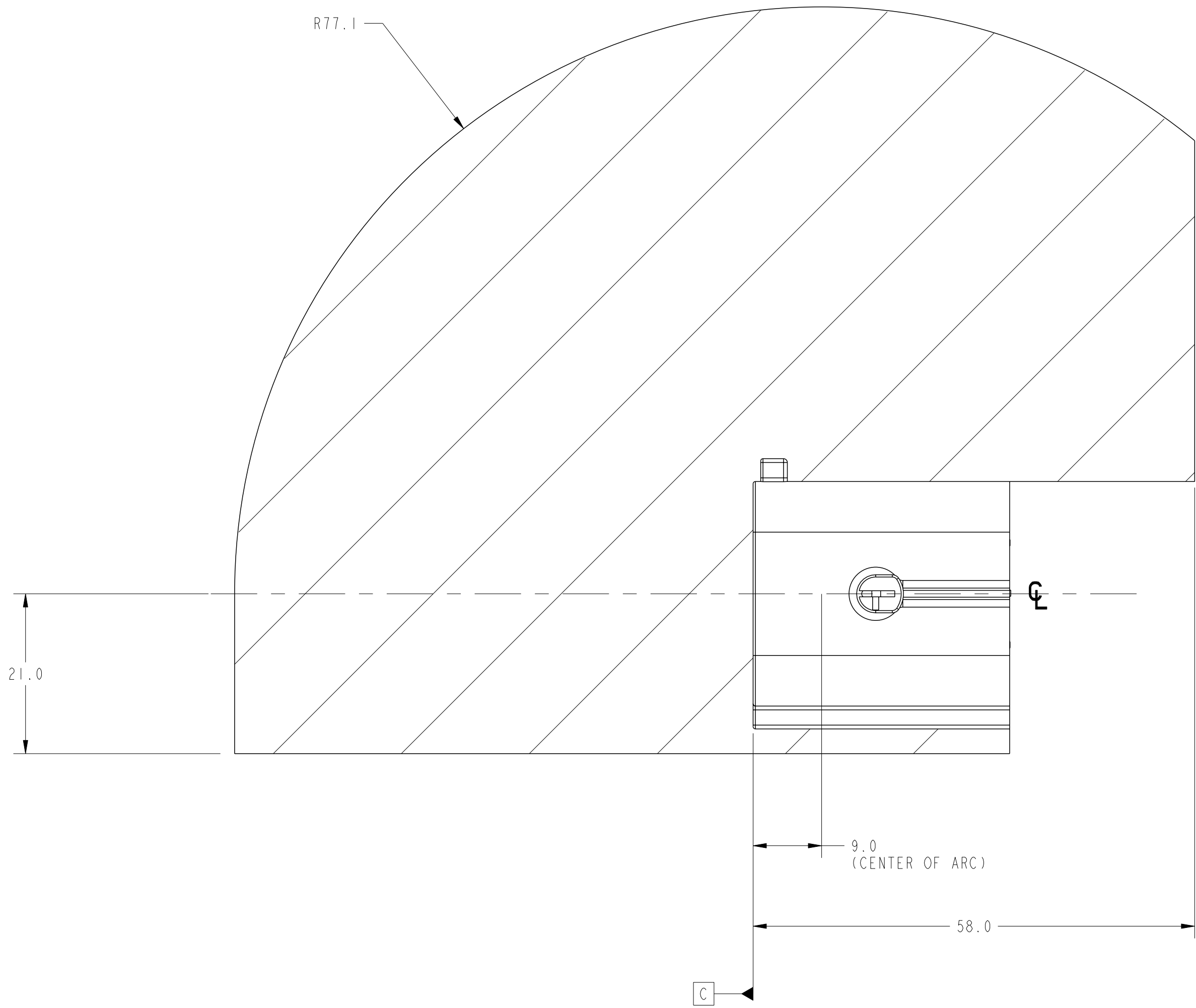
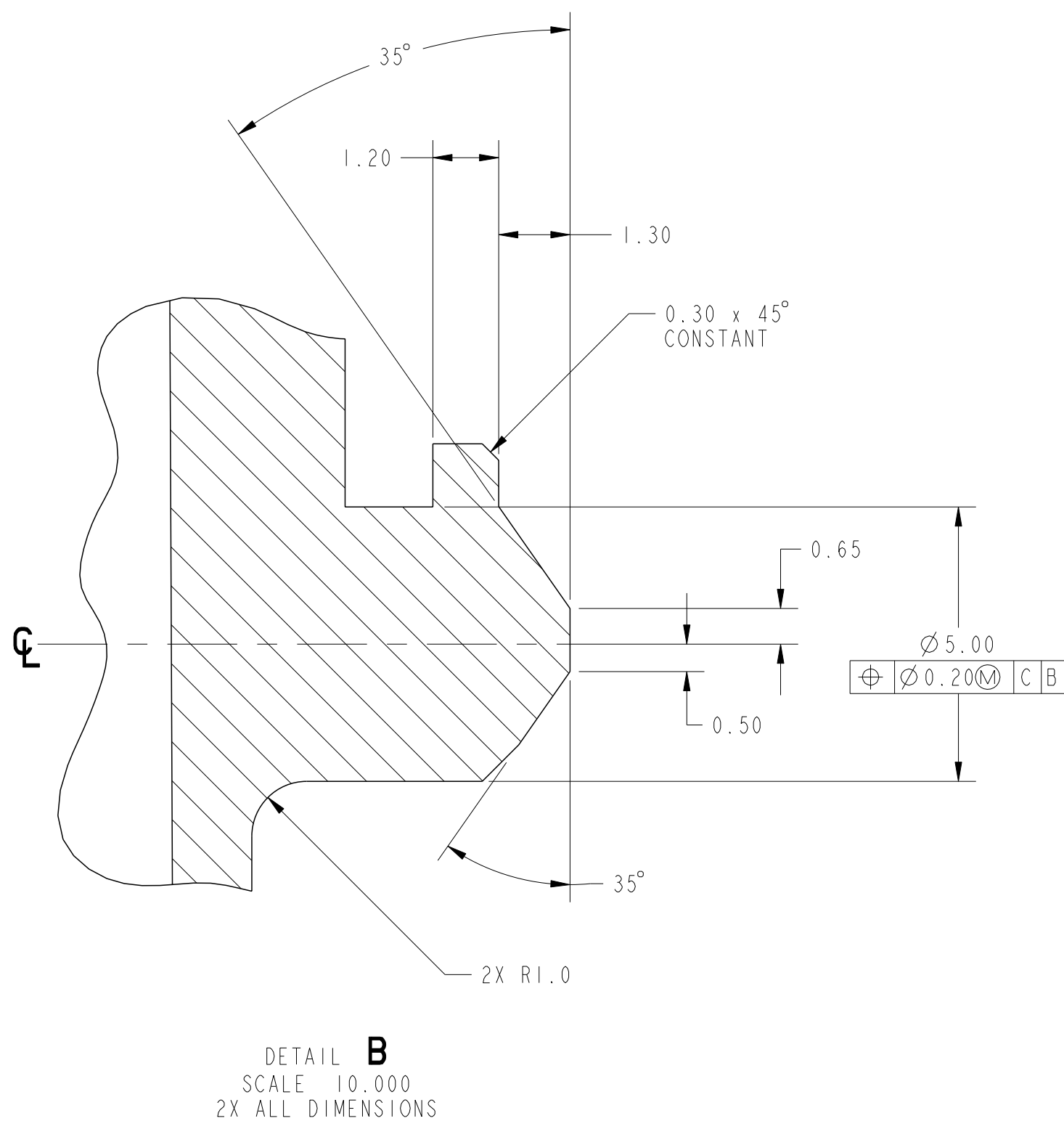
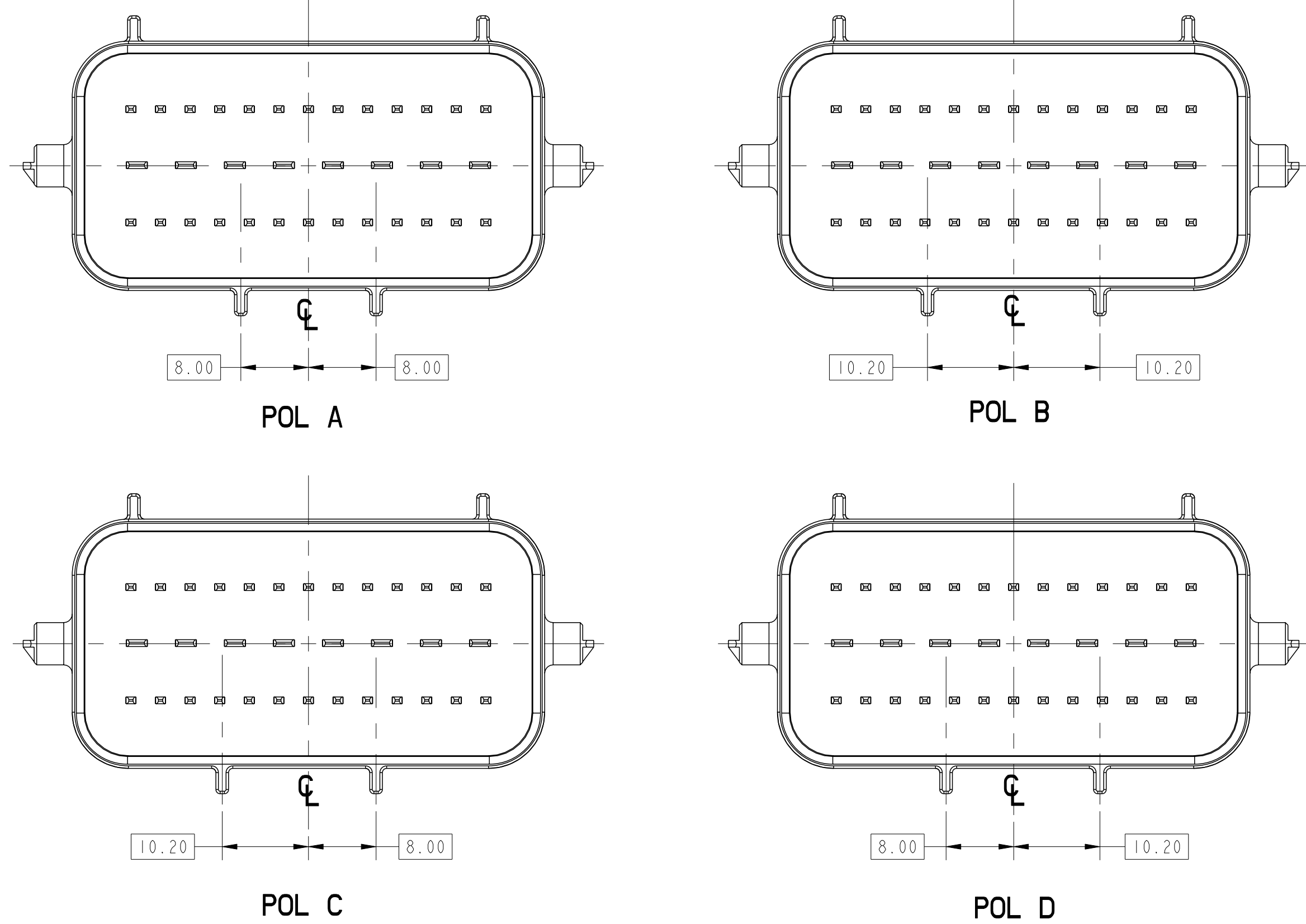
LIST OF PARTS

LIST OF PARTS									FORD		WDP		FORD		WDP		
									ASSEMBLY NUMBER		ASSEMBLY NUMBER		MATING COMPONENT		MATING COMPONENT		
									FUST-14A464-AVB		60013508A01B		FUST-14A624-C*		60013512A01*		
									FUST-14A464-AUB		60013508B01B		FUST-14A624-D*		60013512B01*		
									FUST-14A464-YB		60013508C01B		FUST-14A624-B*		60013512C01*		
					HUST-14A464-CA		60013508D01A		HUST-14A624-A*		60013512D01*						
					AUST-14489-AE		60023508A01E		AUST-14A459-A*		60023512A01*						
					AUST-14489-BE		60023508B01E		AUST-14A459-B*		60023512B01*						
TEMPERATURE RANGE -40°C TO 125°C (CLASS #3)																	
ITEM	DESCRIPTION	COLOR	WDP COMPONENT PART NUMBER	MATERIAL I.D. SYMBOL	NUMBER OF ITEMS REQUIRED												
1	HOUSING (A POL.)	BLACK	3508A-00-001	>PBT-GF30<	1												
2	HOUSING (B POL.)	GRAY	3508B-00-001	>PBT-GF30<		1											
3	HOUSING (C POL.)	BROWN	3508C-00-001	>PBT-GF30<			1										
4	HOUSING (D POL.)	GREEN	3508D-00-001	>PBT-GF30<				1									
5	SPACER	NATURAL	3509-00-001	>PBT+PC-GF30<	1	1	1	1	1	1	1	1	1	1	1	1	
6	GROMMET	GREEN	3508-SI-002	>VMO<	1	1	1	1	1	1	1	1	1	1	1	1	
7	INTERFACIAL SEAL	GREEN	3508-50-001	>VMO<	1	1	1	1	1	1	1	1	1	1	1	1	
8	CAM	GRAY	3511A-00-001	>PBT-GF30<	1	1	1	1	1	1	1	1	1	1	1	1	
9	GROMMET COVER	GRAY	3510B-00-001	>PBT-GF30<	1	1	1	1	1	1	1	1	1	1	1	1	
																	UNSEALED
																	UNSEALED
																	SEALED
																	SEALED
																	SEALED
																	SEALED
																	SEALING

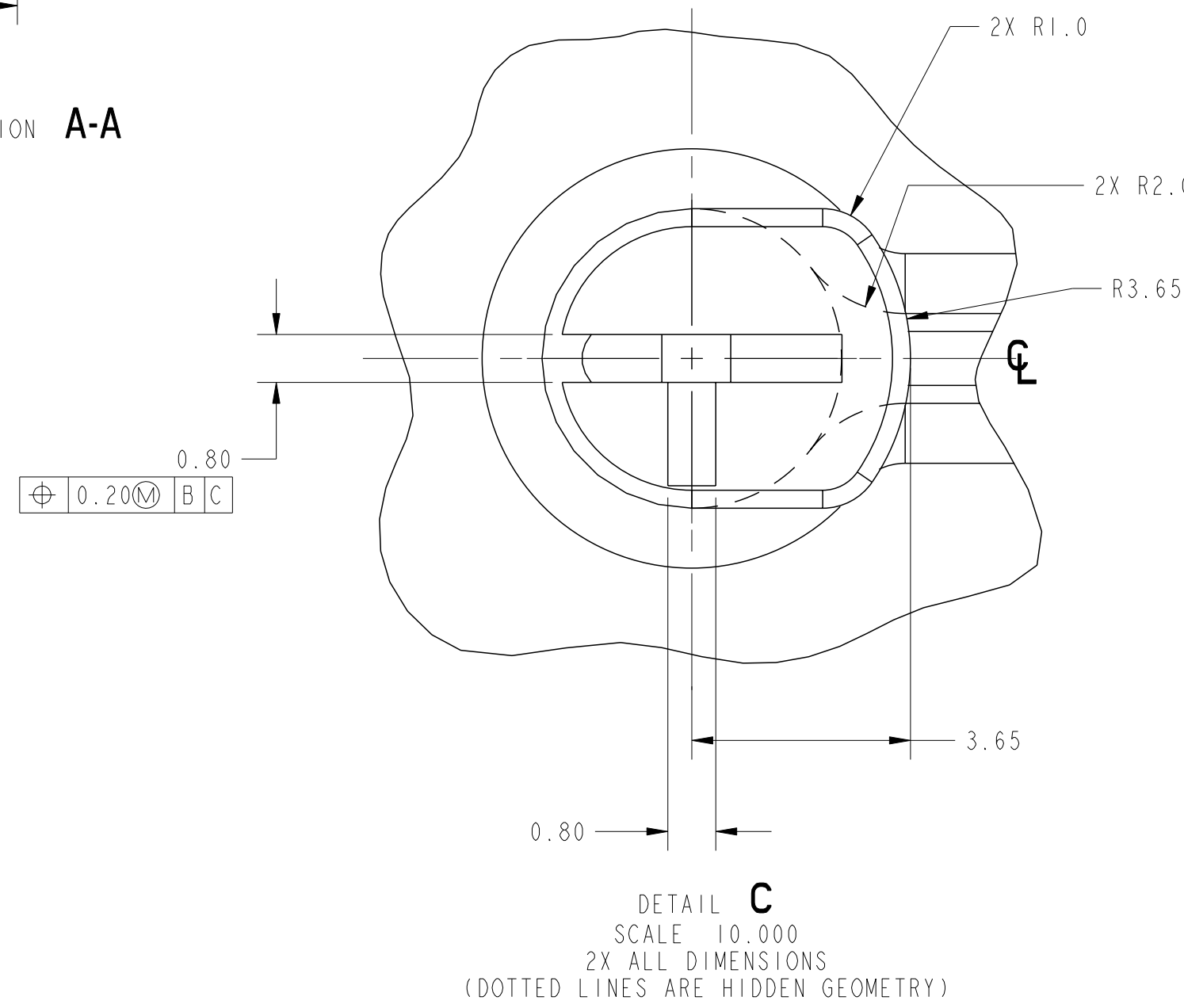
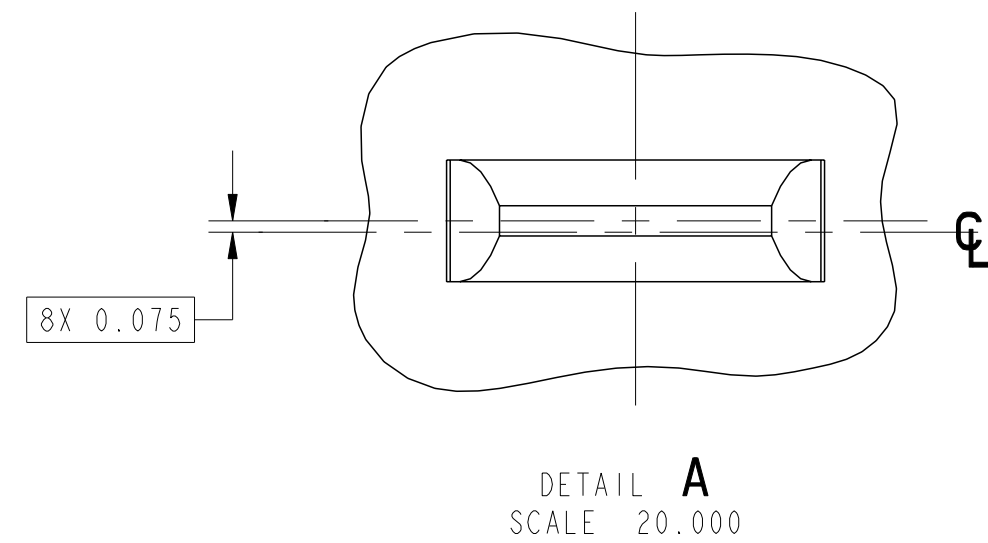
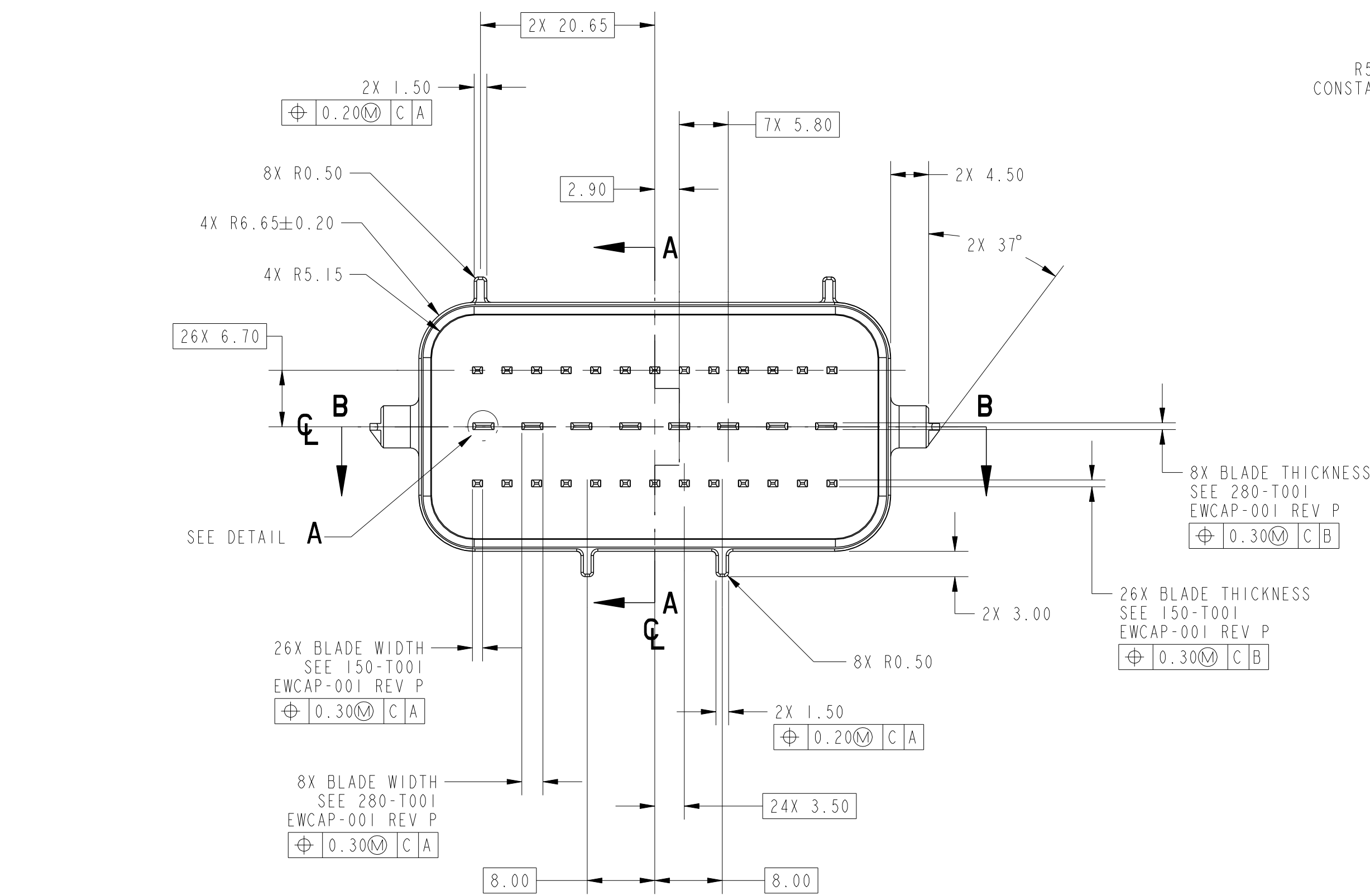
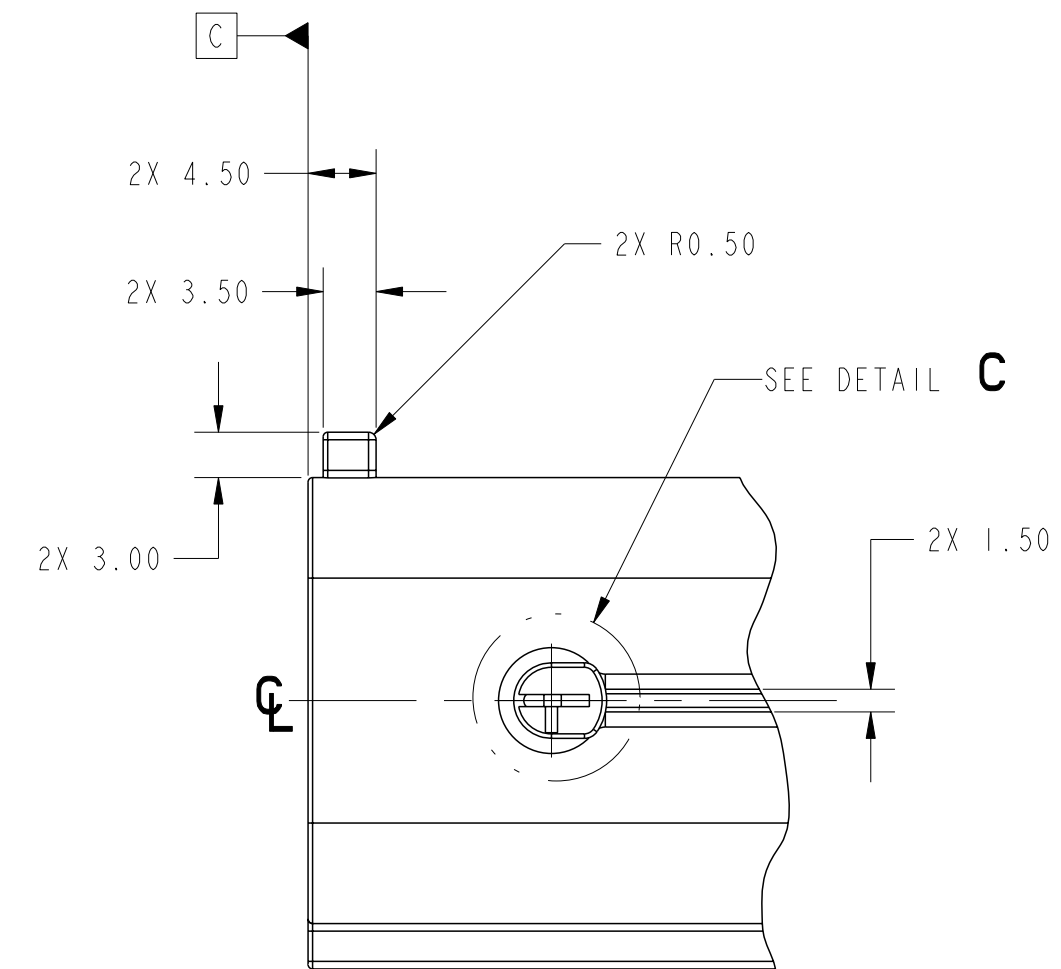
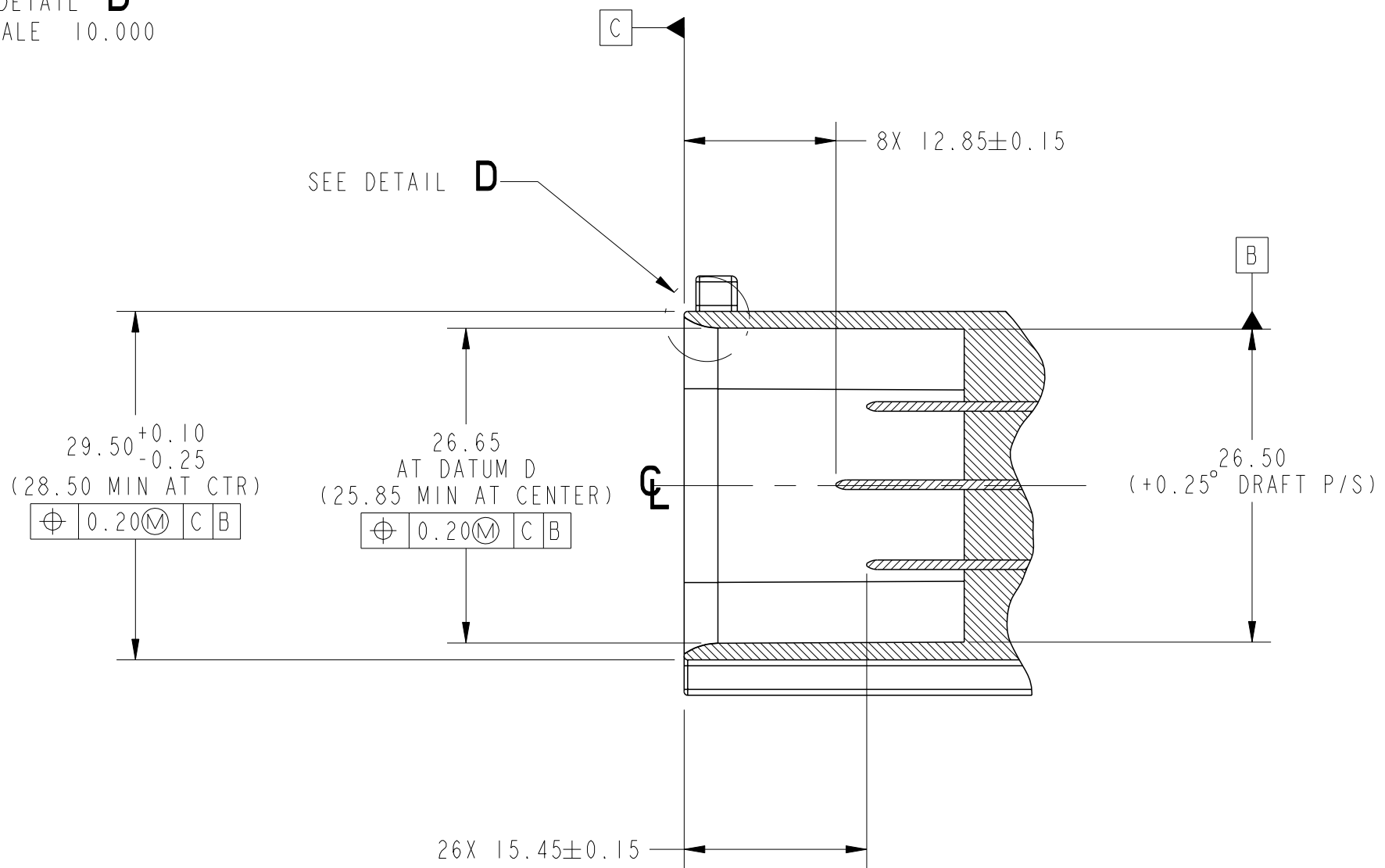
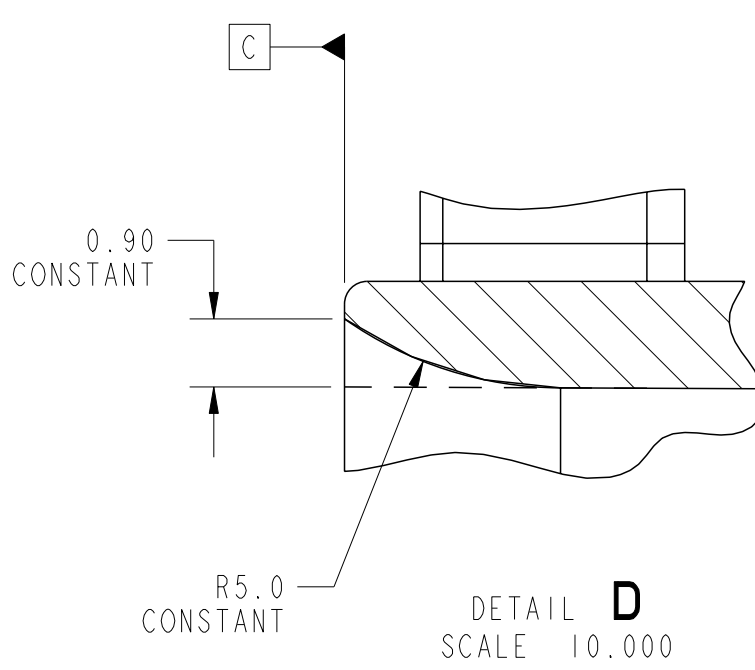
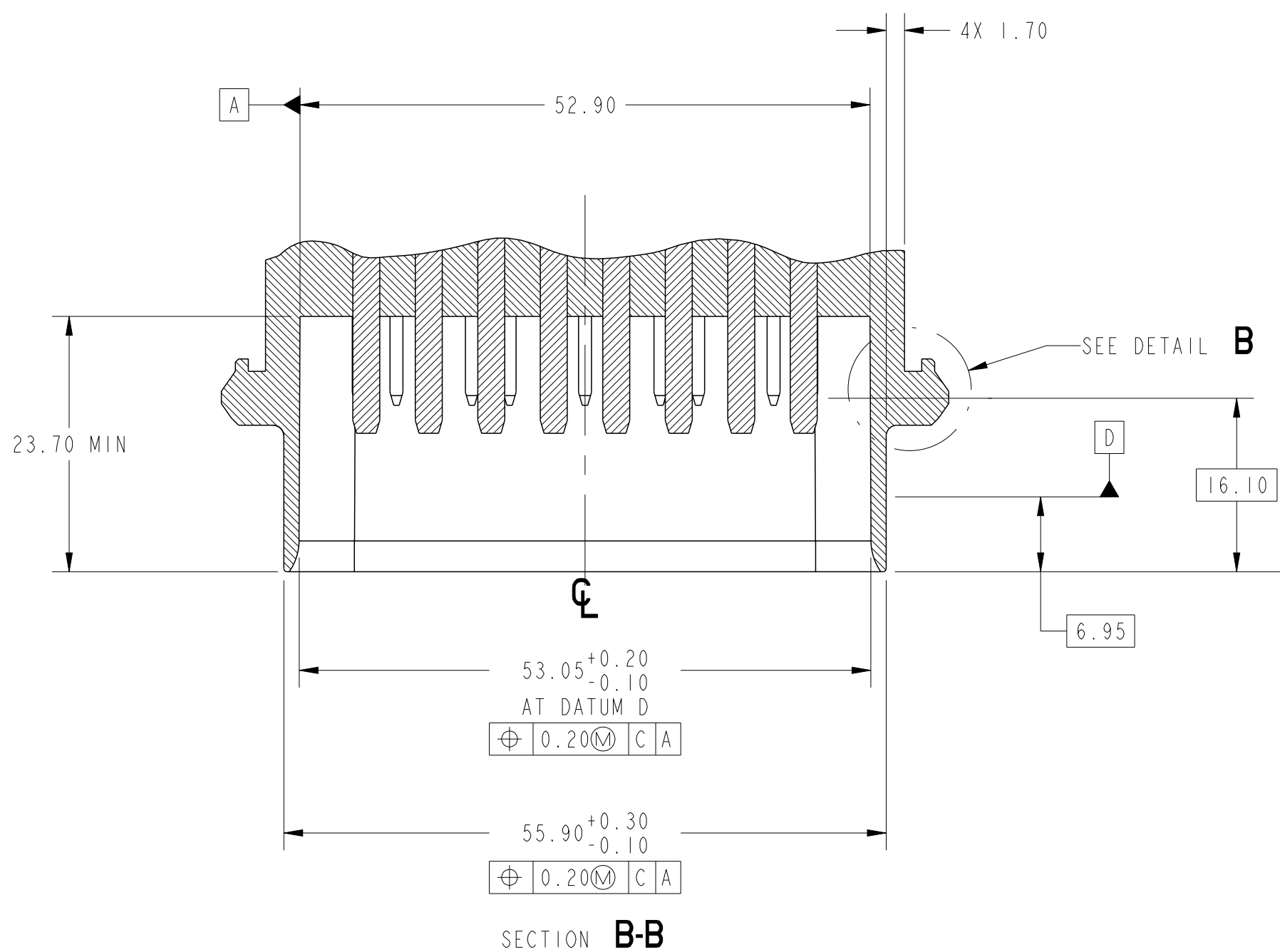
UNSEALED	B	60023508B01E	AU5T-14489-BE
UNSEALED	A	60023508A01E	AU5T-14489-AE
SEALED	D	60013508D01A	HU5T-14A464-CA
SEALED	C	60013508C01B	FU5T-14A464-YB
SEALED	B	60013508B01B	FU5T-14A464-AUB
SEALED	A	60013508A01B	FU5T-14A464-AVB
SEALING	POLARIZATION	WDP ASSEMBLY NO.	FORD ASSEMBLY NO.



WDP Western Diversified Plastics Phone: (269) 668-3393			
REFERENCE			
PART MUST COMPLY WITH RESTRICTED SUBSTANCE MANAGEMENT STANDARD WSS-M99P9999-A1 TO SAFEGUARD HEALTH, SAFETY AND THE ENVIRONMENT			
DRAFTED IN ACCORDANCE WITH FORD MOTOR COMPANY ENGINEERING CAD AND DRAFTING STANDARDS VERSION 28.1		3RD ANGLE PROJ DIMENSIONS ARE IN MILLIMETERS	
CAD TYPE X-PROE	CAD LOC. TCE	CAD FILE	DTMC IS MASTER
OPER. NO.	UNIT	DRAWING FU5T-14A464-AVB	
DESIGN FINSTROM	DETAIL FINSTROM	TITLE SLV ASY WIR CONN FEM	
CHECKED ENSING	SAFETY	SHT 1 OF 1.0	
SCALE 2:1	DATE 20130114	DIVISION PLANT	
FORD MOTOR COMPANY			



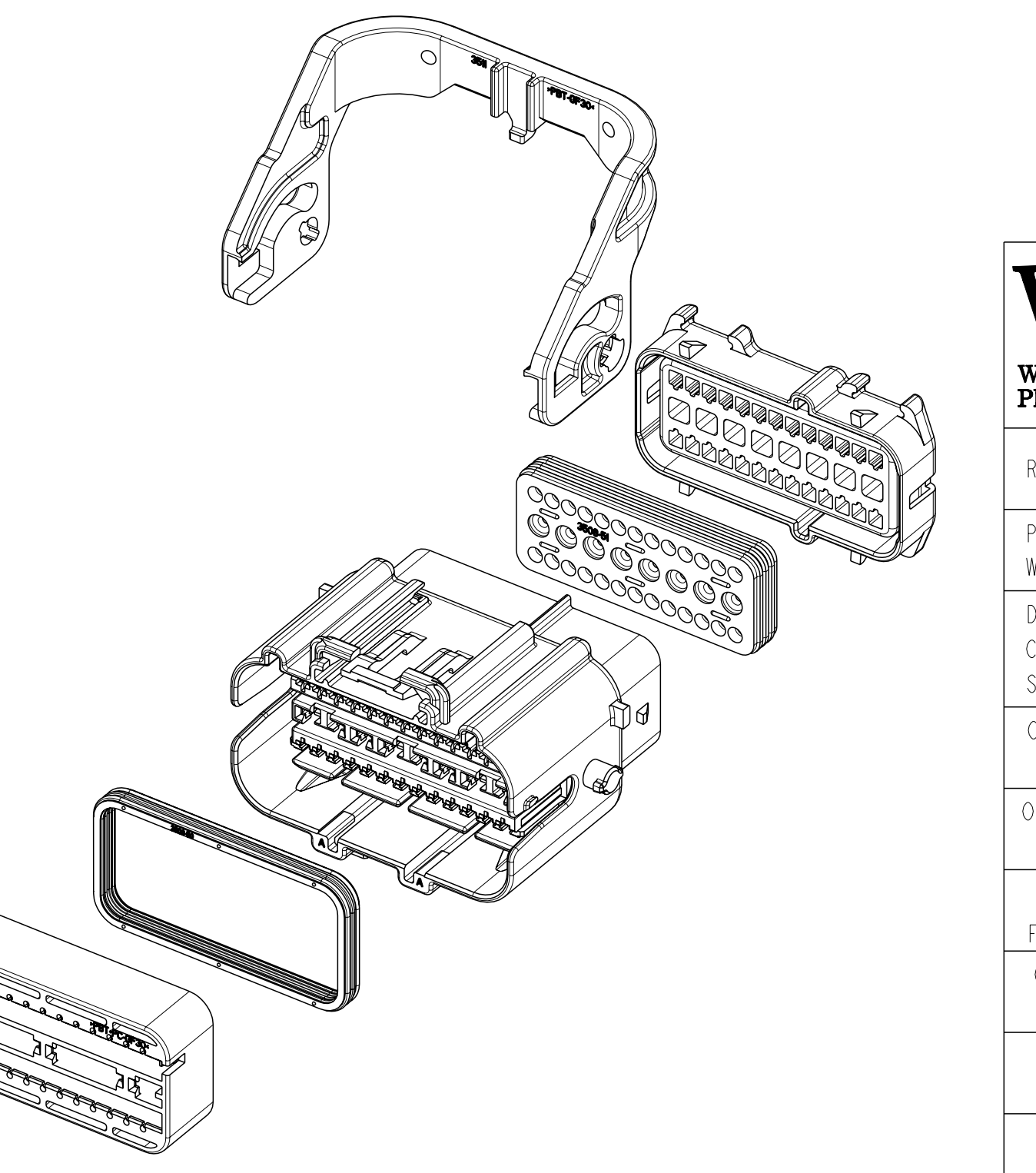
CLEARANCE ZONE FOR CAM HANDLE
AND HAND ACCESS TO CAM HANDLE
ALL DIMENSIONS REFERENCE ONLY


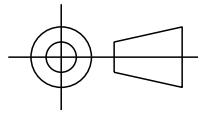



NOTES: UNLESS OTHERWISE SPECIFIED
GENERAL TOLERANCES
±0.3 ALL ONE PLACE DIMENSIONS
±0.10 ALL TWO PLACE DIMENSIONS
±1°00' ALL ANGULAR DIMENSIONS
DRAFT ANGLE PERMISSIBLE ONLY
WITHIN DRAWING TOLERANCE
0°30' MAXIMUM DRAFT ANGLE
ALL UNSPECIFIED RADII: 0.30
0.3 MAXIMUM RADIUS PERMISSIBLE
ON EDGES SHOWN AS SHARP
PART MUST MATE WITH FEMALE CONNECTOR
ASSEMBLIES WITH LIKE POLARIZATION SHOWN
ON THIS DRAWING FU5T-14A464-AVB

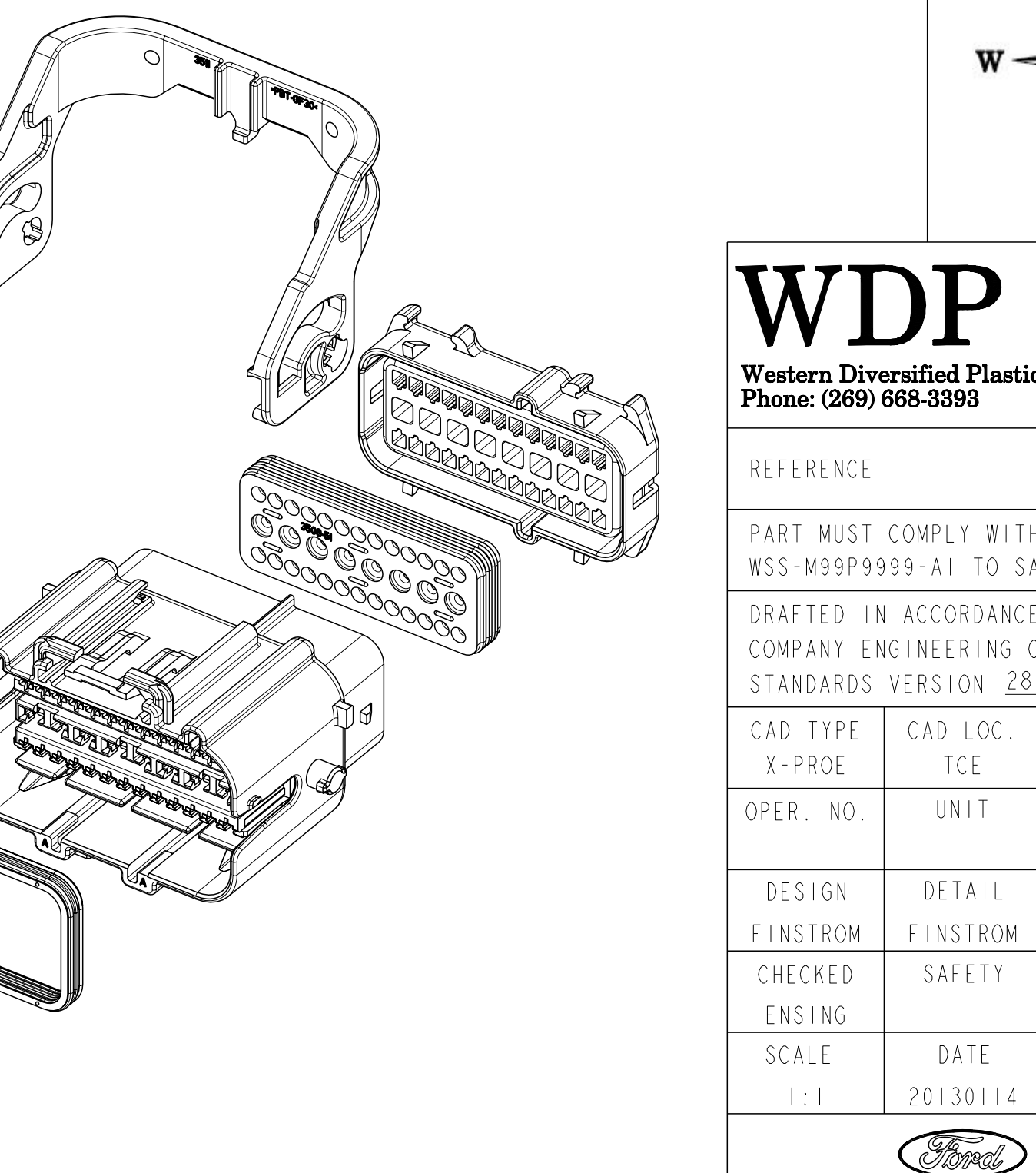
WDP RECEIVED
By Mike Davidson at 1:40 pm, May 21, 2020

WDP Western Diversified Plastics Phone: (269) 668-3393			
REFERENCE			
PART MUST COMPLY WITH RESTRICTED SUBSTANCE MANAGEMENT STANDARD WSS-M99P9999-A1 TO SAFEGUARD HEALTH, SAFETY AND THE ENVIRONMENT			
DRAFTED IN ACCORDANCE WITH FORD MOTOR COMPANY ENGINEERING CAD AND DRAFTING STANDARDS VERSION 28-L			3RD ANGLE PROJ DIMENSIONS ARE IN MILLIMETERS
CAD TYPE X-PROE	CAD LOC. TCE	CAD FILE	DTMC IS MASTER
OPER. NO.	UNIT	DRAWING	FU5T-14A464-AVB
DESIGN FINSTROM	DETAIL FINSTROM	TITLE	SLV ASY WIR CONN FEM
CHECKED ENSING	SAFETY		SHT 2 OF 10
SCALE 2:1	DATE 20130114	DIVISION PLANT	
FORD MOTOR COMPANY			

[illegible]


		<h1>WDP RECEIVED</h1> <p><i>By Mike Davidson at 1:40 pm, May 21, 2020</i></p>			
<h1>WDP</h1> <p>W</p> <p>Diversified Plastics (269) 668-3393</p>					
NCE					
MUST COMPLY WITH RESTRICTED SUBSTANCE MANAGEMENT STANDARD 9P99999-A1 TO SAFEGUARD HEALTH, SAFETY AND THE ENVIRONMENT					
D IN ACCORDANCE WITH FORD MOTOR V ENGINEERING CAD AND DRAFTING RDS VERSION 28.1					
TYPE	CAD LOC. TCE	CAD FILE	<table border="1"> <tr> <td>DWG</td> </tr> <tr> <td>IS MASTER</td> </tr> </table>	DWG	IS MASTER
DWG					
IS MASTER					
NO.	UNIT	DRAWING FU5T-14A464-AVB			
IN COM ED G	DETAIL FINSTRM SAFETY	TITLE SLV ASY WIR CONN FEM			
	DATE 20130114	DIVISION PLANT			
		FORD MOTOR COMPANY			

24	23	22	21	20	19	18	17	16	15	14	13	12	11	10	9	8	7	6	5	4	3	2	1																	
Q	CONN. ASS'Y NO.	TOTAL OPEN HOLDS	1	2	3	4	5	6	7	8	9	10	11	12	13	14	15	16	17	18	19	20	21	22	23	24	25	26	27	28	29	30	31	32	33	34	WDP PART NUMBER	Q		
P	FU5T-1A4464-AV*(727)	15			3	4	5	6	7	8	9	10	11	12	13					18	19	20														60013508A01*(727)	P			
	FU5T-1A4464-AV*(728)	26																		18	19	20	21		24	25									60013508A01*(728)					
	FU5T-1A4464-AV*(729)	23								8	9	10	11	12	13					18	19	20													34	60013508A01*(729)				
	FU5T-1A4464-AV*(730)	17	1	2	3					8	9	10	13							18	19	20	23		26	27	28	29							31	34	60013508A01*(730)			
	FU5T-1A4464-AV*(731)	25				3	4	5		8	9	10	11	12	13																					34	60013508A01*(731)			
	FU5T-1A4464-AV*(732)	21			3	4	5	6	7	8	9	10	11	12	13							20													32	34	60013508A01*(732)			
	FU5T-1A4464-AV*(733)	21			2	3	4	5	6	7												19													33	34	60013508A01*(733)			
	FU5T-1A4464-AV*(734)	25								6	7											12	14		19	21									33	34	60013508A01*(734)			
	FU5T-1A4464-AV*(735)	30																																		60013508A01*(735)				
	FU5T-1A4464-AV*(736)	29																																		60013508A01*(736)				
	FU5T-1A4464-AV*(737)	26																				12	14		19										33	34	60013508A01*(737)			
	FU5T-1A4464-AV*(738)	25																																		33	34	60013508A01*(738)		
O	FU5T-1A4464-AV*(739)	20																																		32	60013508A01*(739)	O		
	FU5T-1A4464-AV*(740)	22																				10														60013508A01*(740)				
	FU5T-1A4464-AV*(741)	26																																		31	32	34	60013508A01*(741)	
	FU5T-1A4464-AV*(742)	22																																			60013508A01*(742)			
	FU5T-1A4464-AV*(743)	23																																			60013508A01*(743)			
	FU5T-1A4464-AV*(744)	21																																			60013508A01*(744)			
	FU5T-1A4464-AV*(745)	20																																			60013508A01*(745)			
	FU5T-1A4464-AV*(746)	20																																			60013508A01*(746)			
	FU5T-1A4464-AV*(747)	22																																			60013508A01*(747)			
	FU5T-1A4464-AV*(748)	21																																			60013508A01*(748)			
	FU5T-1A4464-AV*(749)	16	1	2	3					8	9	10	13									18	19	20	23		26	27	28	29	30	31				60013508A01*(749)				
	FU5T-1A4464-AV*(750)	15	1	2	3					8	9	10	13									18	19	20	22	23		26	27	28	29	30	31			60013508A01*(750)				
	FU5T-1A4464-AV*(751)	25																																			60013508A01*(751)			
	FU5T-1A4464-AV*(752)	21																																			60013508A01*(752)			
	FU5T-1A4464-AV*(753)	29																																			60013508A01*(753)			
	FU5T-1A4464-AV*(754)	23																																			60013508A01*(754)			
	FU5T-1A4464-AV*(755)	23																																			60013508A01*(755)			
	FU5T-1A4464-AV*(756)	25																																			60013508A01*(756)			
	FU5T-1A4464-AV*(757)	32																																			60013508A01*(757)			
	FU5T-1A4464-AV*(758)	29																																			60013508A01*(758)			
	FU5T-1A4464-AV*(759)	27	1																																		60013508A01*(759)			
	FU5T-1A4464-AV*(760)	25																																			60013508A01*(760)			
	FU5T-1A4464-AV*(761)	11																																			60013508A01*(761)			
	FU5T-1A4464-AV*(762)	14																																			60013508A01*(762)			
	FU5T-1A4464-AV*(763)	13																																						



WDP RECEIVED
By Mike Davidson at 1:40 pm, May 21, 2020

RESTRICTED SUBSTANCE MANAGEMENT STANDARD
EQUARDS HEALTH, SAFETY AND THE ENVIRONMENT

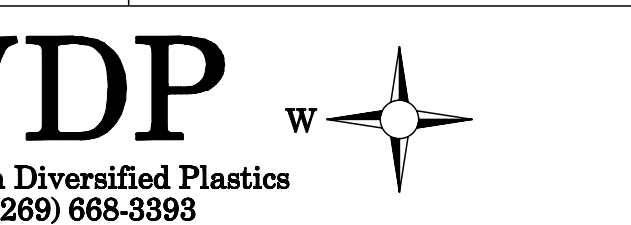
WITH FORD MOTOR LEAD AND DRAFTING .1	 3RD ANGLE PROJ DIMENSIONS ARE IN MILLIMETERS
--	--

CUB FILE DRAWING	IS MASTER FU5T-14A464-AVB
---------------------	------------------------------

TITLE	SHT 5
SLV ASY WIR CONN FEM	OF 10


DIVISION
PLANT
FORD MOTOR COMPANY

	2	1
--	---	---

[illegible]

UST COMPLY WITH RESTRICTED SUBSTANCE MANAGEMENT STANDARD
999999-41 TO SAFEGUARD HEALTH, SAFETY AND THE ENVIRONMENT

DRAWN IN ACCORDANCE WITH FORD MOTOR
Y ENGINEERING CAD AND DRAFTING
RDS VERSION 28.1

 3RD ANGLE PROJ
DIMENSIONS ARE
IN MILLIMETERS

TYPE	CAD LOC.	CAD FILE	DTMC
DE	TCE		IS MASTER
NO	UNIT	DRAWING	

		F051-14A464-AVB	
GN	DETAIL	TITLE	SHT 6
FROM	FINSTROM		OF 10

ED	SAFETY	SLV AST WIR CONN FEM	
IG			
	DATE	DIVISION	

20130114	PLANT
	FORD MOTOR COMPANY

3	2	1
---	---	---

[illegible]

[illegible]