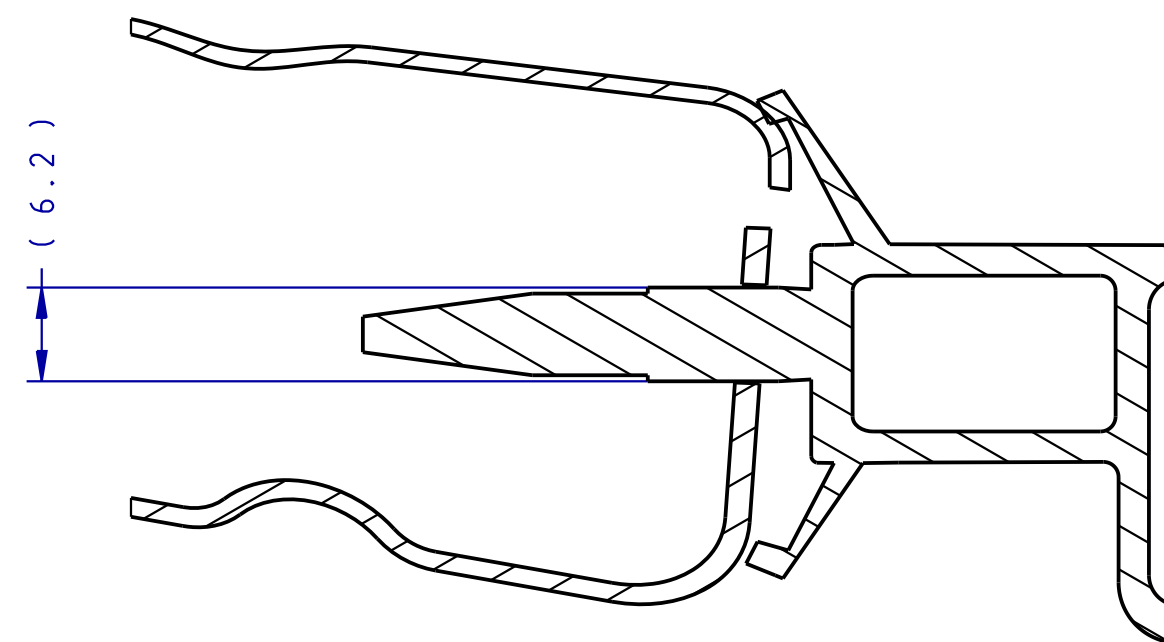
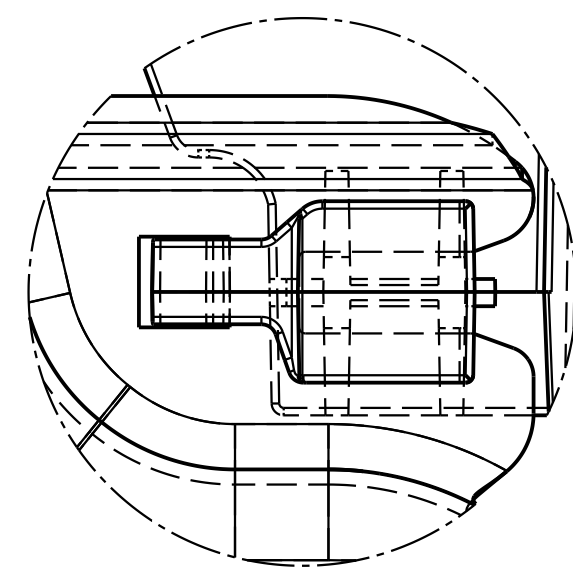


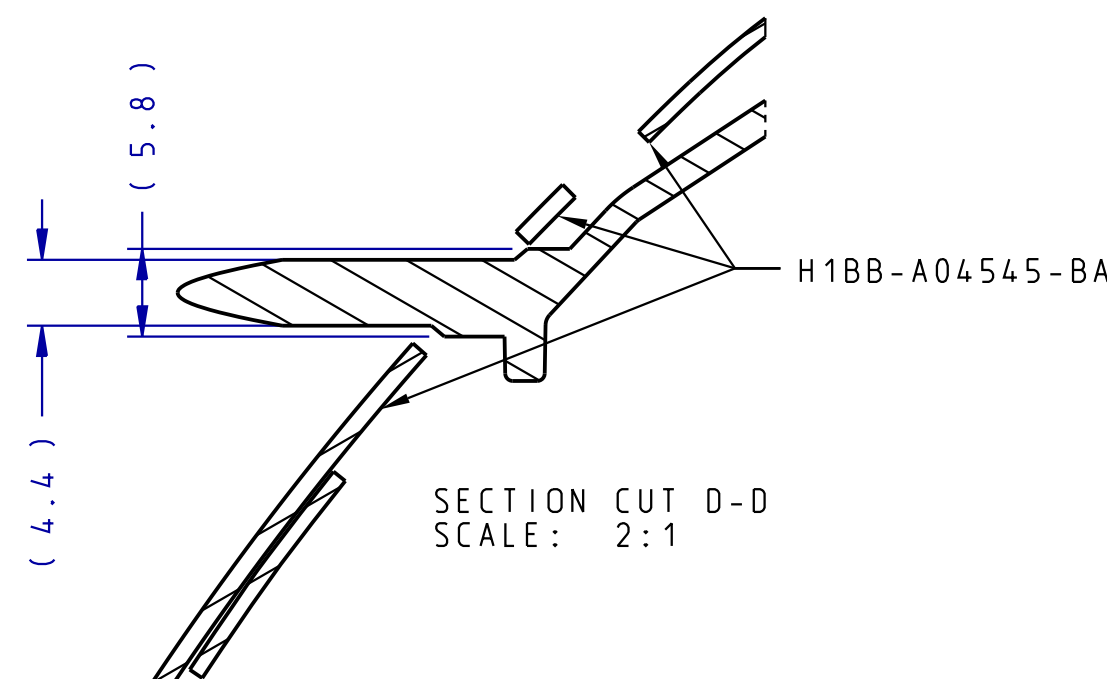
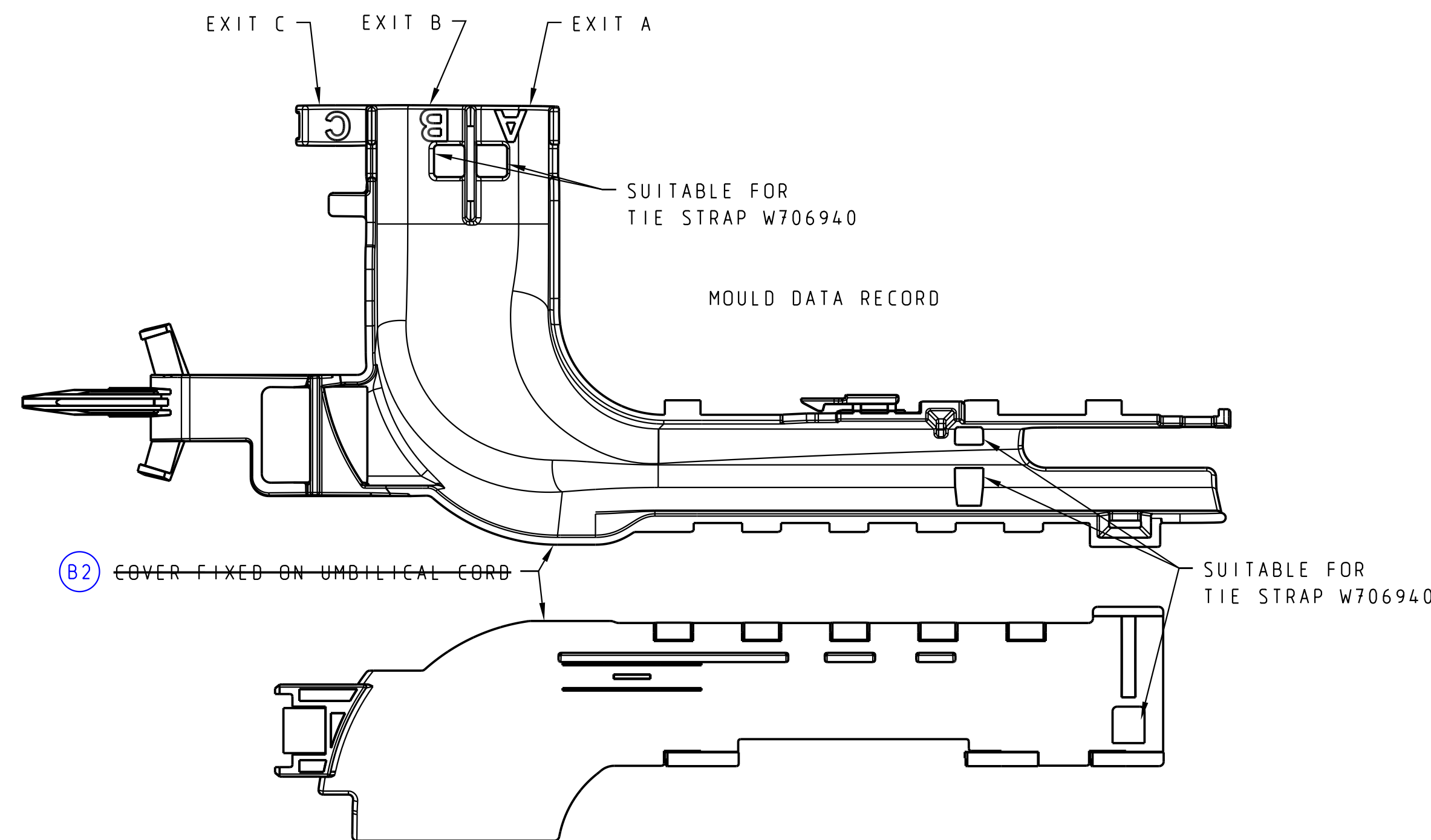
SECTION CUT E-E
SCALE: 2:1



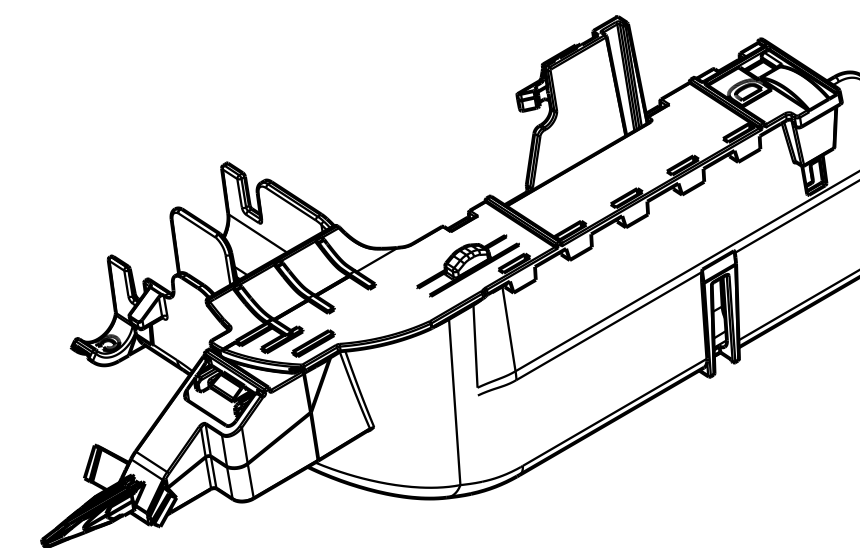
SECTION CUT C-C
SCALE: 2:1



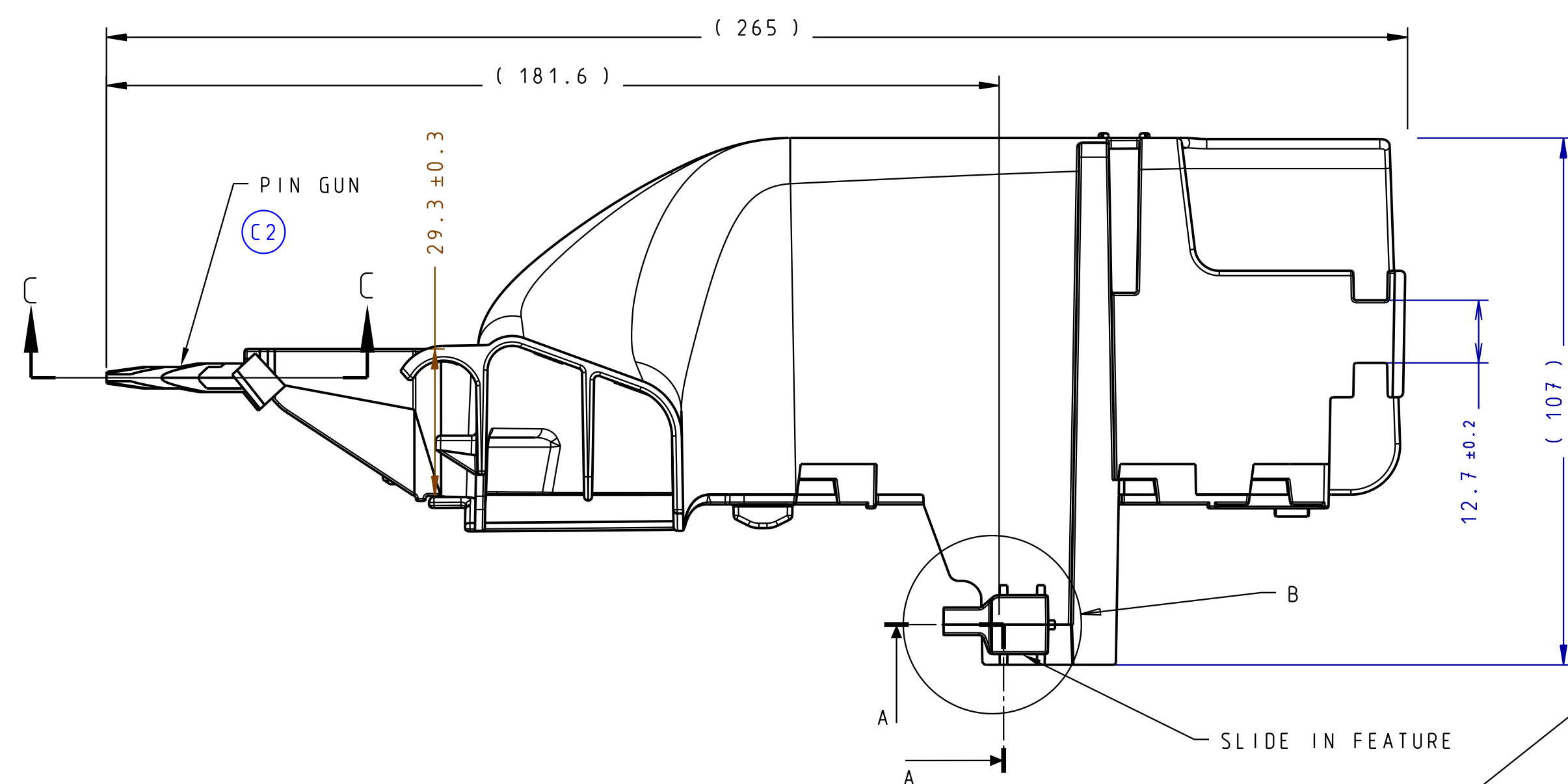
DETAIL B
SCALE: 2:1



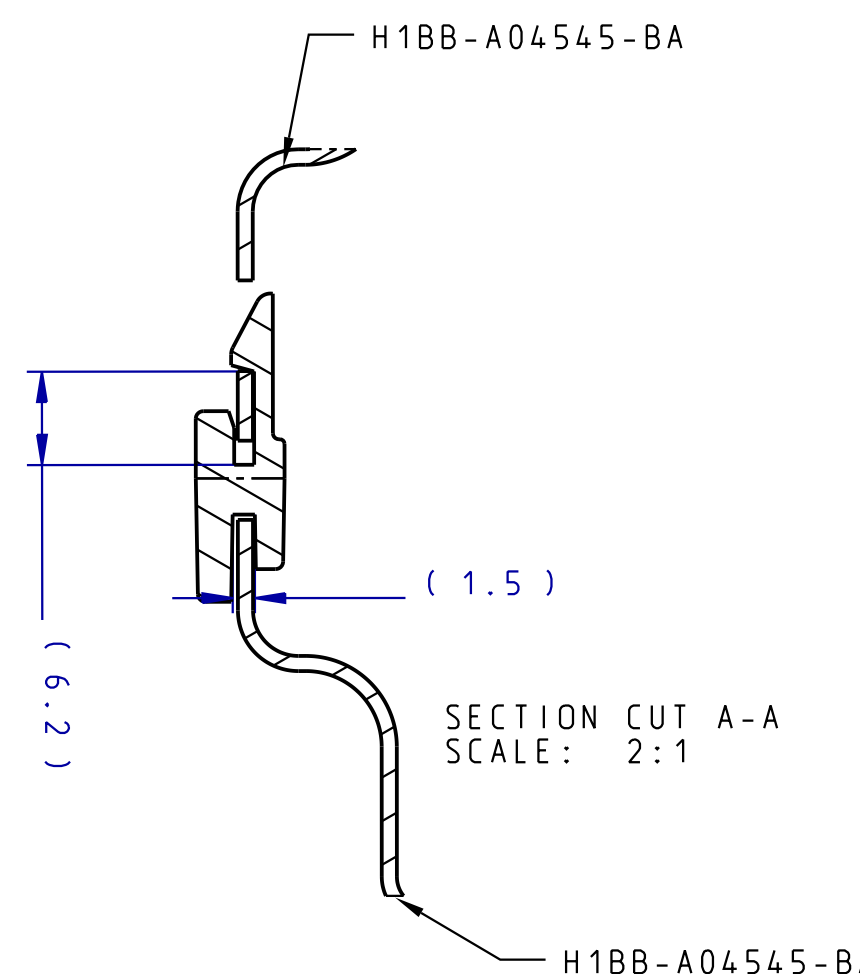
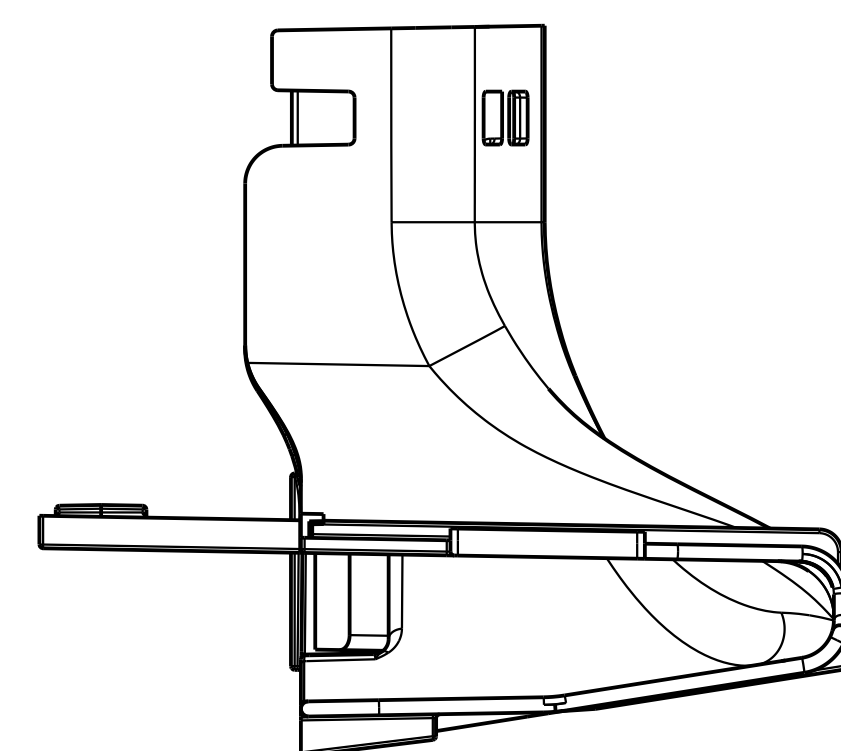
SECTION CUT D-D
SCALE: 2:1



ISOMETRIC VIEW
SCALE: 1:2



PART IS DESIGNED FOR FIXING IN BODY SHEET METAL PLATE H1BB-A04545-BA:
F1: PUSH IN FORCE FOR STEEL PLATE 1.0 MM THICKNESS 75N MAX
F2: PULL OUT FORCE FOR STEEL PLATE 1.0 MM THICKNESS 110N MIN
TESTING WITH PART PRIOR BEING STORED AT CONDITION EQUILIBRIUM +23°C +/-5°



SECTION CUT A-A
SCALE: 2:1

(A1)

NOTES

THE MASTER SOURCE OF INFORMATION FOR THIS DRAWING IS IN A PC COMPUTER DATABASE. CHANGES ARE NOT PERMITTED WITHOUT JOINT AUTHORISATION FROM THE WORLDWIDE FASTENER STANDARDS COMMITTEE AND THE RELEVANT ENGINEERING CAD ACTIVITY

CHANGES TO DESIGN, COMPOSITION OR PROCESSING OF THE PART PREVIOUSLY APPROVED FOR PRODUCTION REQUIRE PRIOR APPROVAL FROM FORD MOTOR COMPANY PRODUCT ENGINEERING. REFER TO ISO/TS 16949

ENGINEERING APPROVAL OF PRODUCTION SAMPLES FROM EACH SUPPLIER REQUIRED PRIOR TO AUTHORISATION OF INITIAL PRODUCTION. FOR SAMPLE REQUIREMENTS SEE ENGINEERING RELEASE

DIMENSIONS AND INSTRUCTIONS WHICH ARE NOT DEFINED ARE LEFT TO THE SUPPLIERS DISCRETION PROVIDING THE FUNCTION OF THE PART IS NOT IMPAIRED

PART AS RECEIVED AT THE FORD PLANT OR SERVICE PART PACKAGER / WAREHOUSE SHALL BE FREE OF ANY CORROSION ALIGNED WITH THE FORD CUSTOMER SERVICE DIVISION (FCSD) PACKAGING AND SHIPPING GUIDE. CORROSION INHIBITORS OR FOREIGN MATERIALS DETRIMENTAL TO THE INSTALLATION OR FUNCTION OF THE PART MUST BE REMOVABLE BY THE INTENDED CLEANING METHOD

ALL UNSPECIFIED FEATURES AND DIMENSIONS TO SUIT MANUFACTURER PROVIDING THE FUNCTION OF THE PART IS NOT IMPAIRED

FOR CURRENT RELEASE STATUS SEE THE WERS ENGINEERING NOTICE

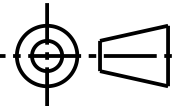

GENERAL TOLERANCES ACC. DIN16742-A1310 PAGE 15 TG6
PARTS TESTED ACC. TO FORD CETP00.00-E-412

MATERIAL: PA66, ACC. SPEC. WSS-M4D706-B1
COLOUR : BLACK
WEIGHT : 100 GRAM

SPECIAL DETAILS FOR TOOLING PROCESS ARE NOT SHOWN IN CAD-MODEL AND DRAWING. TOOL RADIUS APPLICABLE FOR ALL UN-CHAMFERED EDGES

MATERIAL CODE >PA66< TO APPEAR ON PART PER ISO 1043-1 AND ISO 1043-2 (REFERENCING ISO 11469, PLASTIC) AND/OR ISO 1629 (RUBBER)

PART TO CONFORM TO WSS-M99P1111-A STANDARD REQUIREMENTS FOR PRODUCTION MATERIALS

REFERENCE		DI-B479-H1BT-14401-NG-213P4-001	
PART MUST COMPLY WITH RESTRICTED SUBSTANCE MANAGEMENT STANDARD WSS-M99P9999-A1 TO SAFEGUARD HEALTH, SAFETY AND THE ENVIRONMENT			
DRAFTED IN ACCORDANCE WITH FORD MOTOR COMPANY ENGINEERING CAD AND DRAFTING STANDARDS VERSION 28.1			3RD ANGLE PRO DIMENSIONS ARE IN MILLIMETER
CAD TYPE	CAD LOC.	CAD FILE	DTMC
K-CATIA5	TCe	H1BT-14A390-AE-DWG-01	IS MASTER
OPER. NO.	UNIT	DRAWING	
N/A	N/A	H1BT-14A390-AEC	
DESIGN	DETAIL	TITLE	SHT 1
FLUETZAU	FLUETZAU	CVR WIR SHLD	OF 1
CHECKED	SAFETY		N/A
RLIEDTKE	MFG USE		
SCALE	DATE	DIVISION	ESEE
1:1	20150724	PLANT	N/A
		FORD MOTOR COMPANY	