



Part Submission Warrant

22/202497

revA

Part Name Housing Assembly, 46 Way, Sealed Cust. Part Number n/a

Shown on Drawing Number C-2351963 Org. Part Number 2351963-1

Engineering Change Level A8 Dated 20.03.2022

Additional Engineering Changes n/a Dated n/a

Safety and/or Government Regulation ☐ Yes ☒ No Purchase Order No. n/a Weight (kg) 99.80109g

Checking Aid Number n/a Checking Aid Engineering Change Level n/a Dated n/a

ORGANIZATION MANUFACTURING INFORMATION**CUSTOMER SUBMITTAL INFORMATION****TYCO ELECTRONICS (SUZHOU) LTD / 544972834****Nursan Otomotiv Ltd.**

Organization Name and Supplier Code

Customer Name/Division

NO.88, QIMING RD B DIST, EXPORT**n/a**

Street Address

Buyer/Buyer Code

SUZHOU **215121** **China**

City Region Postal Code Country

All models

Application

MATERIALS REPORTING

Has customer-required Substance of Concern information been reported
Submitted by IMDS or other customer format

☒ Yes ☐ No ☐ n/a

875363316 / 6

Are polymeric parts identified with appropriate ISO marking codes?

☒ Yes ☐ No ☐ n/a

REASON FOR SUBMISSION (Check at least one)

- ☒ Initial submission
☐ Engineering Change(s)
☐ Tooling: Transfer, Replacement, Refurbishment, or additional
☐ Correction of Discrepancy
☐ Tooling Inactive > than 1 year

- ☐ Change to Optional Construction or Material
☐ Sub-Supplier or Material Source Change
☐ Change in Part Processing
☐ Parts Produced at Additional Location
☐ Other - please specify

REQUESTED SUBMISSION LEVEL (Check one)

- ☐ Level 1 - Warrant only (and for designated appearance items, an Appearance Approval Report) submitted to customer.
☒ Level 2 - Warrant with product samples and limited supporting data submitted to customer.
☐ Level 3 - Warrant with product samples and complete supporting data submitted to customer.
☐ Level 4 - Warrant and other requirements as defined by customer.
☐ Level 5 - Warrant with product samples and complete supporting data reviewed at supplier's manufacturing location.

SUBMISSION RESULTSThe results for ☒ dimensional measurement ☒ material and functional tests ☐ appearance criteria ☐ statistical process packageThese results meet all design record requirements: ☒ Yes ☐ No (If "No" - Explanation Required)Mold / Cavity / Production Process Assembly**DECLARATION**

I affirm that the samples represented by this warrant are representative of our parts, which were made by a process that meets all Production Part Approval Process Manual 4th Edition Requirements. I further affirm that these samples were produced at the production rate of proprietary / 8 hours. I also certify that documented evidence of such compliance is on file and is available for review. I have noted any deviations from this declaration below.

EXPLANATION/COMMENTS

*PSW coversheet is additional to report no 21/170427 Report is still valid,
no form-fit-function changes on this part.*

Is each Customer Tool properly tagged and numbered? ☐ Yes ☐ No ☒ n/aOrganization Authorized Signature Vedak Date **15.11.2022**Print Name **Veda Kulkarni** Phone No. **+91 080 67022590** Fax **n/a**Title **Quality Manager** Email vedak@te.com**FOR CUSTOMER USE ONLY (IF APPLICABLE)**PPAP Warrant Disposition : ☐ Approved ☐ Rejected ☐ Other

Customer Signature _____ Date _____

Print Name _____ Customer Tracking Number (optional) _____

CODING OPTIONS



SCALE 1:1

CODE A



SCALE 1:1

CODE B



SCALE 1:1

CODE C



SCALE 1:1

CODE D



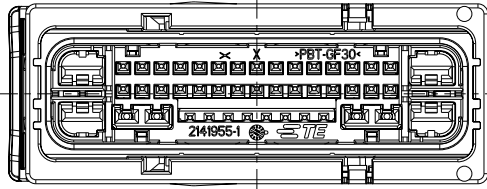
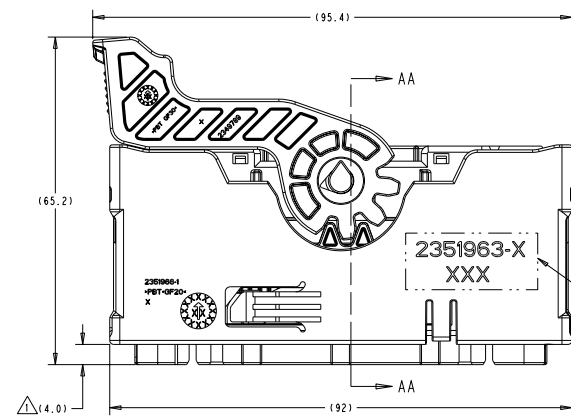
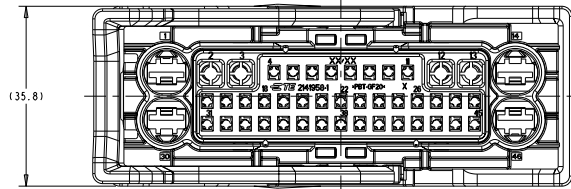
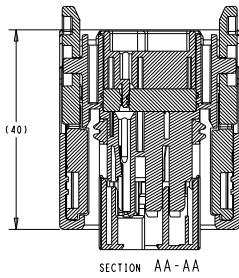
SCALE 1:1

CODE E



SCALE 1:1

CODE F



△ DELIVERY CONDITION: SPACER(TPA) IN PRE-LOCK POSITION.

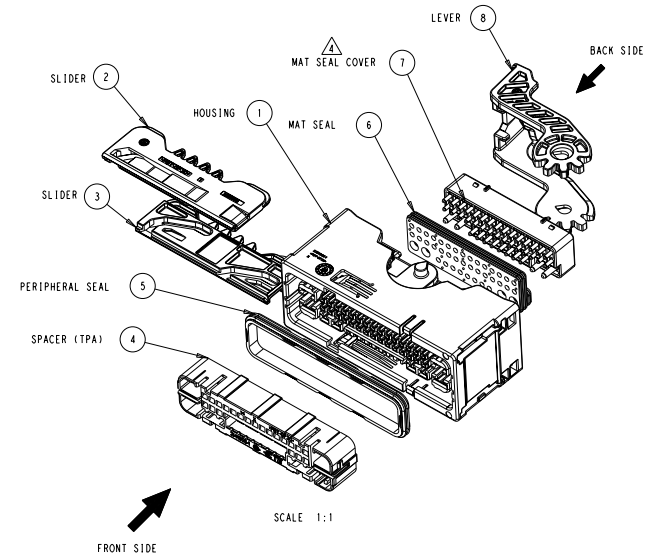
△ SEALING FUNCTION OF THE MAT SEAL REQUIRES THE FOLLOWING WIRE SIZE DIMENSIONS.
0.35mm²- 0.75mm² WITH CABLE OUTER DIAMETER 1.2-1.9mm FOR 0.64mm GENERATION Y TERMINALS.
1.00mm²- 4.00mm² WITH CABLE OUTER DIAMETER 1.9-3.7mm FOR APTIV 2.8mm POWER TERMINALS.

3. APPLICABLE INTERFACE 2351963-INT

△ APPROPRIATE PIN OUT CONFIGURATION OF THE MAT SEAL COVER ACC. PIN OUT TABLE ON SHEET 3 TO BE PUNCHED OUT BEFORE ASSEMBLING THE MAT SEAL COVER.


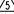
△ A THREE DIGIT MARKING AND THE TE CONNECTIVITY PART NUMBER ACC. PIN OUT TABLE ON SHEET 3 TO BE PRINTED AFTER ASSEMBLY PROCESS.

6. WIRE DRESS COVER ASSEMBLY 2348486-1 IS REQUIRED, SOLD AS SEPARATE PART



APPLICABLE COMPONENTS

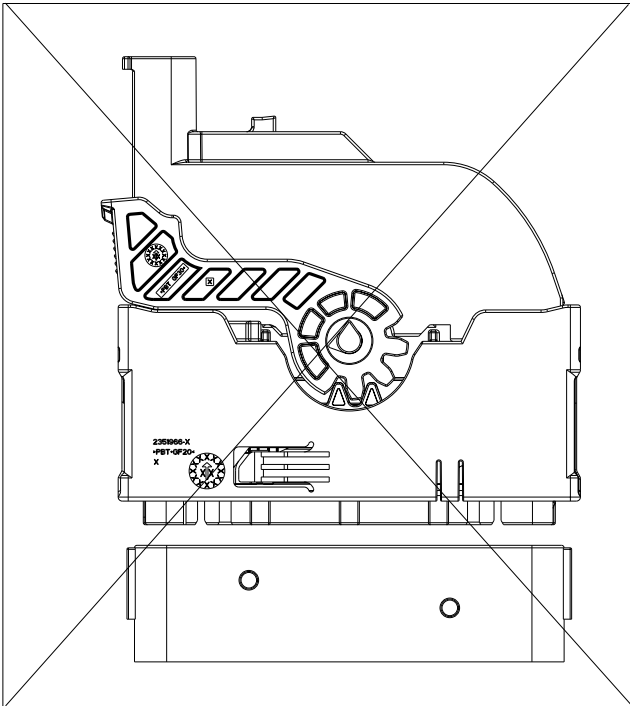
DESCRIPTION	PLATING/ COLOUR	SUPPLIER	SUPPLIER PART NO. (WIRE SIZE) △	TE APPL. SPEC. TE PROD. SPEC.	APPL. CONTACT CAVITY NUMBER
0.64 GENERATION Y UNSEALED FEMALE TERMINAL	TIN	TE	2098753-6 (0.75mm ²)	114-13183	4-11, 15-29, 31-45
0.64 GENERATION Y UNSEALED FEMALE TERMINAL	TIN	TE	2098753-5 (0.35-0.5mm ²)	114-13183	4-11, 15-29, 31-45
2.8 UNSEALED FEMALE TERMINAL	TIN	APTIV	10757690 (1.0mm ²)	-	2, 3, 12, 13
2.8 UNSEALED FEMALE TERMINAL	TIN	APTIV	10762803 (1.5-2.5mm ²)	-	2, 3, 12, 13
2.8 UNSEALED FEMALE TERMINAL	TIN	APTIV	15422738 (3mm ²)	-	2, 3, 12, 13
2.8 UNSEALED FEMALE TERMINAL	TIN	APTIV	10762802 (4mm ²)	-	2, 3, 12, 13
6.3 SEALED FEMALE TERMINAL	TIN	YAZAKI	7116-4140-02 (0.5-1.0mm ²)	-	1, 14, 30, 46
6.3 SEALED FEMALE TERMINAL	TIN	YAZAKI	7116-4141-02 (1.5-2.5mm ²)	-	1, 14, 30, 46
6.3 SEALED FEMALE TERMINAL	TIN	YAZAKI	7116-4142-02 (4.0mm ²)	-	1, 14, 30, 46
6.3 SEALED FEMALE TERMINAL	TIN	YAZAKI	7116-4143-02 (AWG 10)	-	1, 14, 30, 46
WIRE SEAL FOR 6.3 TERMINAL (SMALL)	RED	YAZAKI	7158-3081-50	-	-
WIRE SEAL FOR 6.3 TERMINAL (MEDIUM)	BLUE	YAZAKI	7158-3082-90	-	-
WIRE SEAL FOR 6.3 TERMINAL (LARGE)	BLACK	YAZAKI	7158-3083	-	-
WIRE SEAL FOR 6.3 TERMINAL (X-LARGE)	LIGHT GREY	YAZAKI	7158-3084-40	-	-
PLUG FOR 6.3 TERMINAL	GREEN	YAZAKI	7158-3080-60	-	1, 14, 30, 46
WIRE COVER ASSEMBLY (90+45 DEGREE)	-	TE	2340161-1	-	-
WIRE COVER ASSEMBLY (90 DEGREE)	-	TE	2348486-1	-	-

	1	PBT-GF30	LEVER	GREY	8
	1	PBT-GF20	MAT SEAL COVER	BLACK	7
	1	SILICONE	MAT SEAL 	LIGHT BLUE	6
	1	SILICONE	PERIPHERAL SEAL	LIGHT BLUE	5
	1	PBT-GF30	SPACER (TPA)	RED	4
	1	PBT-GF30	SLIDER LEFT	BLACK	3
	1	PBT-GF30	SLIDER RIGHT	BLACK	2
	1	PBT-GF20	HOUSING, CODE F	BLACK	1
	1	PBT-GF20	HOUSING, CODE E	BLACK	1
	1	PBT-GF20	HOUSING, CODE D	BLACK	1
	1	PBT-GF20	HOUSING, CODE C	BLACK	1
	1	PBT-GF20	HOUSING, CODE B	BLACK	1
	1	PBT-GF20	HOUSING, CODE A	BLACK	1
	2351963-X	MATERIAL	DESCRIPTION	COLOR	ITEM NO
	SEE SHEET 3		PARTS LIST		

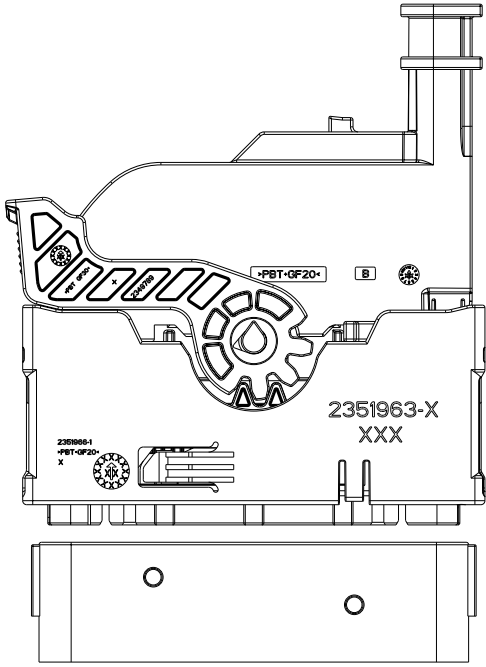
SEE SHEET 3

PARTS LIST

THIS DRAWING IS A CONTROLLED DOCUMENT.		DATE: 01MAR2019	
DRAWN BY: M. KUMAR		CHECKED BY: M. KUMAR	
DESIGNED BY: M. KUMAR		APPROVED BY: M. KUMAR	
OPERATION: 05MAR2019		NAME: M. KUMAR	
PRODUCT SPEC: 05MAR2019		NAME: M. KUMAR	
APPLICATION SPEC: 05MAR2019		NAME: M. KUMAR	
MATERIAL: 05MAR2019		NAME: M. KUMAR	
FINISH: 05MAR2019		NAME: M. KUMAR	
CUSTOMER DRAWING		SCALE: 2:1	
SHEET: 1		OF: 3	
REV: A		REV: A	

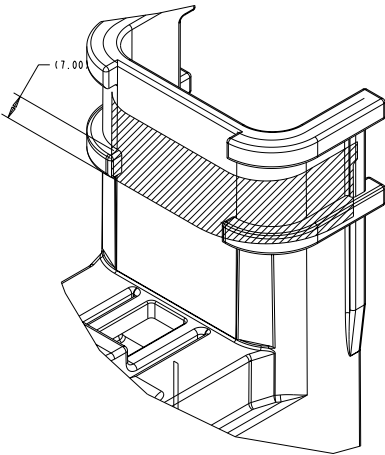


DO NOT ASSEMBLE THE WIRE COVER
IN THIS ORIENTATION



COVER ASSEMBLED IN THE CORRECT
ORIENTATION

DO NOT TAPE OUTSIDE THE HASHED AREA



SCALE 4:1
2348486-1

REVISIONS				
P	LN	DESCRIPTION	DATE	APPD
-	-	SEE SHEET 1	-	-

THIS DRAWING IS A CONTROLLED DOCUMENT.				DATE 01MAR2019	
DRAWN BY M. KUMAR				DATE 05MAR2019	
CHECKED BY D. WISSELER				DATE 22MAR2019	
APPROVED BY A. MICHAEL				NAME	
PRODUCT SPEC				HOUSING ASSEMBLY, 46 WAY, SEALED.	
APPLICATION SPEC				SIZE CASE CODE DRAWING NO	
MATERIAL				A1 - C=2351963	
FINISH				RESTRICTED TO	
CUSTOMER DRAWING				SCALE 2:1 SHEET 2 OF 3 REV A8	



REVISIONS					
P	LTN	DESCRIPTION	DATE	DRG	APPRO
-		SEE SHEET 1	-	-	-

(A)	005	A	235 1963-6	26	20				4	6	8			11				17	18	20						25	27	28	29			33	34	35		38	40	42	43	44	45									
(M)	004	A	235 1963-5	29	17				4	6	8			11				17	18							25	28	29			33	34	35		38	40	42	43	44	45										
(H)	003	A	235 1963-4	30	16				4	6	8	9	10	11			16	18							24	25	27	29			33	34	35			41	42	43	44	45										
(N)	002	A	235 1963-3	31	15				4	6		9	10	11				18	20						25	27	29			33	34				40	42	43	44	45											
	001	A	235 1963-2	29	17								10	11			15	17	19	20	21			24	25	26	27	28	29	31	33							43	44	45										
	000	A	235 1963-1	46	0																																													
MARKING FOR PINOUT CONFIGURATION ⚠	CODING OPTION	TE PART NUMBER ⚠	TOTAL OPEN	TOTAL BLOCKED	1	2	3	4	5	6	7	8	9	10	11	12	13	14	15	16	17	18	19	20	21	22	23	24	25	26	27	28	29	30	31	32	33	34	35	36	37	38	39	40	41	42	43	44	45	46
			CHARTED BLOCKED CAVITY CONFIGURATIONS WITH A CAVITY NUMBER LISTED INDICATE BLOCKED TERMINAL POSITIONS ⚠																																															
			CHARTED BLOCKED CAVITY CONFIGURATIONS WITHOUT A CAVITY NUMBER LISTED INDICATE OPEN TERMINAL POSITIONS ⚠																																															

Printed on 8 Apr 2022 21:14 (China Standard Time) from 1E335432 C

B

A

THIS DRAWING IS A CONTROLLED DOCUMENT.		DWG NO. KUMAR DATE 01MAR2019 DESIGNED BY W. MISSEL DATE 02MAR2019	 TE Connectivity	
DIMENSIONS: CONNECTIONS (INCHES) (MM)		NAME HOUSING ASSEMBLY, 46 WAY, SEALED.		
 D P.C. # A E P.C. # B F P.C. # 08.13 G P.C. # 0 H P.C. # 0 J P.C. # 0 K P.C. # 0 L P.C. # 0 M P.C. # 0 N P.C. # 0 O P.C. # 0 P P.C. # 0 Q P.C. # 0 R P.C. # 0 S P.C. # 0 T P.C. # 0 U P.C. # 0 V P.C. # 0 W P.C. # 0 X P.C. # 0 Y P.C. # 0 Z P.C. # 0 AA P.C. # 0 AB P.C. # 0 AC P.C. # 0 AD P.C. # 0 AE P.C. # 0 AF P.C. # 0 AG P.C. # 0 AH P.C. # 0 AI P.C. # 0 AJ P.C. # 0 AK P.C. # 0 AL P.C. # 0 AM P.C. # 0 AN P.C. # 0 AO P.C. # 0 AP P.C. # 0 AQ P.C. # 0 AR P.C. # 0 AS P.C. # 0 AT P.C. # 0 AU P.C. # 0 AV P.C. # 0 AW P.C. # 0 AX P.C. # 0 AY P.C. # 0 AZ P.C. # 0 BA P.C. # 0 BB P.C. # 0 BC P.C. # 0 BD P.C. # 0 BE P.C. # 0 BF P.C. # 0 BG P.C. # 0 BH P.C. # 0 BI P.C. # 0 BJ P.C. # 0 BK P.C. # 0 BL P.C. # 0 BM P.C. # 0 BN P.C. # 0 BO P.C. # 0 BP P.C. # 0 BQ P.C. # 0 BR P.C. # 0 BS P.C. # 0 BT P.C. # 0 BU P.C. # 0 BV P.C. # 0 BW P.C. # 0 BX P.C. # 0 BY P.C. # 0 BZ P.C. # 0 CA P.C. # 0 CB P.C. # 0 CC P.C. # 0 CD P.C. # 0 CE P.C. # 0 CF P.C. # 0 CG P.C. # 0 CH P.C. # 0 CI P.C. # 0 CJ P.C. # 0 CK P.C. # 0 CL P.C. # 0 CM P.C. # 0 CN P.C. # 0 CO P.C. # 0 CP P.C. # 0 CQ P.C. # 0 CR P.C. # 0 CS P.C. # 0 CT P.C. # 0 CU P.C. # 0 CV P.C. # 0 CW P.C. # 0 CX P.C. # 0 CY P.C. # 0 CZ P.C. # 0 DA P.C. # 0 DB P.C. # 0 DC P.C. # 0 DD P.C. # 0 DE P.C. # 0 DF P.C. # 0 DG P.C. # 0 DH P.C. # 0 DI P.C. # 0 DJ P.C. # 0 DK P.C. # 0 DL P.C. # 0 DM P.C. # 0 DN P.C. # 0 DO P.C. # 0 DP P.C. # 0 DQ P.C. # 0 DR P.C. # 0 DS P.C. # 0 DT P.C. # 0 DU P.C. # 0 DV P.C. # 0 DW P.C. # 0 DX P.C. # 0 DY P.C. # 0 DZ P.C. # 0 EA P.C. # 0 EB P.C. # 0 EC P.C. # 0 ED P.C. # 0 EE P.C. # 0 EF P.C. # 0 EG P.C. # 0 EH P.C. # 0 EI P.C. # 0 EJ P.C. # 0 EK P.C. # 0 EL P.C. # 0 EM P.C. # 0 EN P.C. # 0 EO P.C. # 0 EP P.C. # 0 EQ P.C. # 0 ER P.C. # 0 ES P.C. # 0 ET P.C. # 0 EU P.C. # 0 EV P.C. # 0 EW P.C. # 0 EX P.C. # 0 EY P.C. # 0 EZ P.C. # 0 FA P.C. # 0 FB P.C. # 0 FC P.C. # 0 FD P.C. # 0 FE P.C. # 0 FF P.C. # 0 FG P.C. # 0 FH P.C. # 0 FI P.C. # 0 FJ P.C. # 0 FK P.C. # 0 FL P.C. # 0 FM P.C. # 0 FN P.C. # 0 FO P.C. # 0 FP P.C. # 0 FQ P.C. # 0 FR P.C. # 0 FS P.C. # 0 FT P.C. # 0 FU P.C. # 0 FV P.C. # 0 FW P.C. # 0 FX P.C. # 0 FY P.C. # 0 FZ P.C. # 0 GA P.C. # 0 GB P.C. # 0 GC P.C. # 0 GD P.C. # 0 GE P.C. # 0 GF P.C. # 0 GG P.C. # 0 GH P.C. # 0 GI P.C. # 0 GJ P.C. # 0 GK P.C. # 0 GL P.C. # 0 GM P.C. # 0 GN P.C. # 0 GO P.C. # 0 GP P.C. # 0 GQ P.C. # 0 GR P.C. # 0 GS P.C. # 0 GT P.C. # 0 GU P.C. # 0 GV P.C. # 0 GW P.C. # 0 GX P.C. # 0 GY P.C. # 0 GZ P.C. # 0 HA P.C. # 0 HB P.C. # 0 HC P.C. # 0 HD P.C. # 0 HE P.C. # 0 HF P.C. # 0 HG P.C. # 0 HH P.C. # 0 HI P.C. # 0 HJ P.C. # 0 HK P.C. # 0 HL P.C. # 0 HM P.C. # 0 HN P.C. # 0 HO P.C. # 0 HP P.C. # 0 HQ P.C. # 0 HR P.C. # 0 HS P.C. # 0 HT P.C. # 0 HU P.C. # 0 HV P.C. # 0 HW P.C. # 0 HX P.C. # 0 HY P.C. # 0 HZ P.C. # 0 IA P.C. # 0 IB P.C. # 0 IC P.C. # 0 ID P.C. # 0 IE P.C. # 0 IF P.C. # 0 IG P.C. # 0 IH P.C. # 0 II P.C. #				

<div>■ EPZ</div> <div>产品检验报告</div>				Date: 2021.12.24 SHEET 1 OF 1				
PART NO.: 2351963* PART NAME: HOUSING ASSEMBLY, 48 WAY SEALED Customer Name: NA								
DC-NA		QTY/pcs		Customer P/N: NA				
S/NO	Dimension/Item	tolerance	INSTRU	Sample 1	Sample 2		RESULT	REMARK
1	2		DTM	2.012	2.008		NA	REF尺寸超出
2	2		DTM	1.959	1.970		NA	REF尺寸超出
3	35.8		C	35.93	35.93		NA	REF尺寸超出
4	95.4		DTM	95.519	95.551		NA	REF尺寸超出
5	65.2		CO	65.011	65.213		NA	REF尺寸超出
6	40		C	39.79	39.73		NA	REF尺寸超出
7	4		CO	4.141	4.099		NA	REF尺寸超出
8	92		C	92.13	92.12		NA	REF尺寸超出
NOTES								
1	DELIVERY CONDITION: SPACER/IN IN PRELOCK POSITION.			OK	OK		OK	
2	REALING FUNCTION OF THE MAT SEAL REQUIRES THE FOLLOWING WIRE SIZE DIMENS IONES. 35mm*2. 575mm*2 WITH CABLE OUTER DIAMETERS 1.2, 1.5, 2mm FOR 58mm DIMENSION. TERMINALS 1, 2, 3, 4, 5, 6, 7, 8, 9, 10, 11, 12, 13, 14, 15, 16, 17, 18, 19, 20, 21, 22, 23, 24, 25, 26, 27, 28, 29, 30, 31, 32, 33, 34, 35, 36, 37, 38, 39, 40, 41, 42, 43, 44, 45, 46, 47, 48, 49, 50, 51, 52, 53, 54, 55, 56, 57, 58, 59, 60, 61, 62, 63, 64, 65, 66, 67, 68, 69, 70, 71, 72, 73, 74, 75, 76, 77, 78, 79, 80, 81, 82, 83, 84, 85, 86, 87, 88, 89, 90, 91, 92, 93, 94, 95, 96, 97, 98, 99, 100, 101, 102, 103, 104, 105, 106, 107, 108, 109, 110, 111, 112, 113, 114, 115, 116, 117, 118, 119, 120, 121, 122, 123, 124, 125, 126, 127, 128, 129, 130, 131, 132, 133, 134, 135, 136, 137, 138, 139, 140, 141, 142, 143, 144, 145, 146, 147, 148, 149, 150, 151, 152, 153, 154, 155, 156, 157, 158, 159, 160, 161, 162, 163, 164, 165, 166, 167, 168, 169, 170, 171, 172, 173, 174, 175, 176, 177, 178, 179, 180, 181, 182, 183, 184, 185, 186, 187, 188, 189, 190, 191, 192, 193, 194, 195, 196, 197, 198, 199, 200, 201, 202, 203, 204, 205, 206, 207, 208, 209, 210, 211, 212, 213, 214, 215, 216, 217, 218, 219, 220, 221, 222, 223, 224, 225, 226, 227, 228, 229, 230, 231, 232, 233, 234, 235, 236, 237, 238, 239, 240, 241, 242, 243, 244, 245, 246, 247, 248, 249, 250, 251, 252, 253, 254, 255, 256, 257, 258, 259, 260, 261, 262, 263, 264, 265, 266, 267, 268, 269, 270, 271, 272, 273, 274, 275, 276, 277, 278, 279, 280, 281, 282, 283, 284, 285, 286, 287, 288, 289, 290, 291, 292, 293, 294, 295, 296, 297, 298, 299, 300, 301, 302, 303, 304, 305, 306, 307, 308, 309, 310, 311, 312, 313, 314, 315, 316, 317, 318, 319, 320, 321, 322, 323, 324, 325, 326, 327, 328, 329, 330, 331, 332, 333, 334, 335, 336, 337, 338, 339, 340, 341, 342, 343, 344, 345, 346, 347, 348, 349, 350, 351, 352, 353, 354, 355, 356, 357, 358, 359, 360, 361, 362, 363, 364, 365, 366, 367, 368, 369, 370, 371, 372, 373, 374, 375, 376, 377, 378, 379, 380, 381, 382, 383, 384, 385, 386, 387, 388, 389, 390, 391, 392, 393, 394, 395, 396, 397, 398, 399, 400, 401, 402, 403, 404, 405, 406, 407, 408, 409, 410, 411, 412, 413, 414, 415, 416, 417, 418, 419, 420, 421, 422, 423, 424, 425, 426, 427, 428, 429, 430, 431, 432, 433, 434, 435, 436, 437, 438, 439, 440, 441, 442, 443, 444, 445, 446, 447, 448, 449, 450, 451, 452, 453, 454, 455, 456, 457, 458, 459, 460, 461, 462, 463, 464, 465, 466, 467, 468, 469, 470, 471, 472, 473, 474, 475, 476, 477, 478, 479, 480, 481, 482, 483, 484, 485, 486, 487, 488, 489, 490, 491, 492, 493, 494, 495, 496, 497, 498, 499, 500, 501, 502, 503, 504, 505, 506, 507, 508, 509, 510, 511, 512, 513, 514, 515, 516, 517, 518, 519, 520, 521, 522, 523, 524, 525, 526, 527, 528, 529, 530, 531, 532, 533, 534, 535, 536, 537, 538, 539, 540, 541, 542, 543, 544, 545, 546, 547, 548, 549, 550, 551, 552, 553, 554, 555, 556, 557, 558, 559, 560, 561, 562, 563, 564, 565, 566, 567, 568, 569, 570, 571, 572, 573, 574, 575, 576, 577, 578, 579, 580, 581, 582, 583, 584, 585, 586, 587, 588, 589, 590, 591, 592, 593, 594, 595, 596, 597, 598, 599, 600, 601, 602, 603, 604, 605, 606, 607, 608, 609, 610, 611, 612, 613, 614, 615, 616, 617, 618, 619, 620, 621, 622, 623, 624, 625, 626, 627, 628, 62							

GAD CN 0258 (REV B)

1573289-2

长春化工(漳州)有限公司
CHANG CHUN CHEMICAL(ZHANGZHOU) CO., LTD.

福建省漳州市台商投资区龙池工业园保生路

FAX:(0596)6269688 Baosheng Rd, Longchi Industry Park, Taiwanese Investment Zone, Zhangzhou, Fujian, China TEL:(0596)6269085

Certificate of Analysis

We Certify Products Below Has Passed The Specifications At Our Laboratory Test

Product :Polybutylene Terephthalate

Page:1/1

Customer:长龙化工(深圳)有限公司

Order No:E21AA001437

Date:2021/11/03

Customer Order:2500015881/2500015901

Items	Method	Spec.	Result
Lot_No			Z211023A22
Grade			3020104
Ash Content(%)	ASTM D5630	18.00 - 22.00	19.56
Specifc gravity	ASTM D792	1.420 - 1.460	1.434
Tensile Strength(kg/cm2)	CCP Method	≥950	1139
Tensile Elongation(%)	CCP Method	≥3.50	4.57
Flexural Strength(kg/cm2)	ASTM D790	≥1500	1726
Flexural Modulus(kg/cm2)	ASTM D790	≥60000	60560
Impact Strength(kg-cm/cm)	ASTM D256(moulded	≥5.00	7.38
M.I.(g/10min)	ASTM D1238	18.00 - 28.00	26.49
Quantity			16,000.0KG

1573289-2

21.11.19

Page Quantity :16,000.0 KG

Total Quantity :16,000.0KG



QA Sec. Manager:

X F - Zhang

FQCB045QA01/1.0/保存3年

长春化工(漳州)有限公司
CHANG CHUN CHEMICAL(ZHANGZHOU) CO., LTD.

福建省漳州市台商投资区龙池工业园保生路

FAX:(0596)6269688 Baosheng Rd, Longchi Industry Park, Taiwanese Investment Zone, Zhangzhou, Fujian, China TEL:(0596)6269085

Certificate of Analysis

We Certify Products Below Has Passed The Specifications At Our Laboratory Test

Product :Polybutylene Terephthalate

Page:1/1

Customer:长龙化工（深圳）有限公司

Order No:E21AA001484

Date:2021/11/13

Customer Order:2500015901/16035/16057

Items	Method	Spec.	Result
Lot_No			Z211026C2T
Grade			3030201
Filler Content(%)	ASTM D5630	28.00 - 33.00	30.31
Specifc gravity	ASTM D792	1.490 - 1.550	1.519
Tensile Strength(kg/cm2)	CCP Method	≥ 1100	1430
Tensile Elongation(%)	CCP Method	≥ 3.50	4.41
Flexural Strength(kg/cm2)	ASTM D790	≥ 1800	2122
Flexural Modulus(kg/cm2)	ASTM D790	≥ 70000	84530
Izod Impact Strength(Notchec	ASTM D256(moulded	≥ 9.00	15.85
M.I.(g/10min)	ASTM D1238	14.00 - 22.00	17.38
Quantity			6,000.0KG

Page Quantity :6,000.0 KG

Total Quantity :6,000.0KG



QA Sec. Manager:

XF - Zhang

FQCB045QA01/1.0/保存3年

LABORATORY MATERIAL TEST REPORT

serial no.:04192142

CUSTOMER :	TE CONNECTIVITY	COMPOUND:	A2361Q
PART NO. :	2141957-1	LOT NO. :	10183720
PART NAME:	GROMMET	MATR'L. :	SILICONE
TEST DATE:	01-08-21	SPEC.NO.:	PRINT

TYPE OF TEST	/ SPECIFICATION /	TEST RESULTS
ORIGINAL PROPERTIES, ASTM D2240		
HARDNESS, SHORE A,	18+-5	19

Approved by Richard Rybka
Richard Rybka, Technical Manager

Date: April 19, 2021

QUALITY SYNTHETIC RUBBER, INC. CERTIFIES THAT THIS MATERIAL HAS BEEN TESTED IN ACCORDANCE WITH ALL NOTED TEST METHODS AND THAT THE RESULTS OBTAINED MEET SPECIFICATION REQUIREMENTS UNLESS OTHERWISE NOTED ON THIS REPORT. THE INFORMATION CONTAINED HEREIN APPLIES TO THE SPECIFIC LOT OF MATERIAL NOTED ABOVE. NO WARRANTY OF ANY KIND IS HEREIN CONSTRUED OR IMPLIED. THIS REPORT SHALL NOT BE REPRODUCED EXCEPT IN FULL, WITHOUT THE WRITTEN APPROVAL OF QUALITY SYNTHETIC RUBBER, INC.

长春化工(漳州)有限公司
CHANG CHUN CHEMICAL(ZHANGZHOU) CO., LTD.

福建省漳州市台商投资区龙池工业园保生路

FAX:(0596)6269688 Baosheng Rd, Longchi Industry Park, Taiwanese Investment Zone, Zhangzhou, Fujian, China TEL:(0596)6269085

Certificate of Analysis

We Certify Products Below Has Passed The Specifications At Our Laboratory Test

Product :Polybutylene Terephthalate

Page:1/1

Customer:长龙化工（深圳）有限公司

Order No:E21AA001510

Date:2021/11/20

Customer Order:2500015901/16035

Items	Method	Spec.	Result
Lot_No			Z211111A21
Grade			3020104
Ash Content(%)	ASTM D5630	18.00 - 22.00	19.69
Specifc gravity	ASTM D792	1.420 - 1.460	1.430
Tensile Strength(kg/cm2)	CCP Method	≥ 950	1159
Tensile Elongation(%)	CCP Method	≥ 3.50	4.76
Flexural Strength(kg/cm2)	ASTM D790	≥ 1500	1735
Flexural Modulus(kg/cm2)	ASTM D790	≥ 60000	60600
Impact Strength(kg-cm/cm)	ASTM D256(moulded)	≥ 5.00	6.88
M.I.(g/10min)	ASTM D1238	18.00 - 28.00	26.09
Quantity			16,000.0KG

Page Quantity :16,000.0 KG

Total Quantity :16,000.0KG



QA Sec. Manager:

XF - Zhang

FQCB045QA01/1.0/保存3年